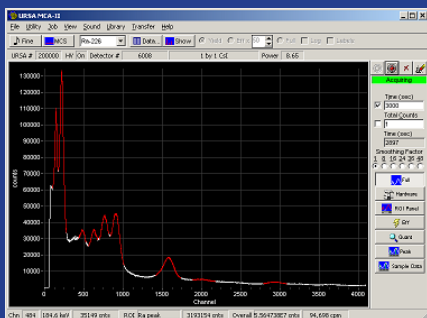




# OPERATION MANUAL



**RADIATION**  
A • L • E • R • T

# Contents

Introduction.....	4
URSA-II MCA Minimum System Requirements.....	4
URSA-II Technical Specification .....	4
Hardware Description and Controls .....	4
Front End Panel .....	4
Back End Panel.....	5
Battery Compartment .....	5
Powering the URSA-II.....	5
AC Power Supply .....	5
Charging the Internal NiMH Batteries .....	5
Using Alkaline Batteries .....	5
Alternate External Power.....	5
Starting URSA-II for the First Time .....	6
Initial Startup Steps .....	6
Functions, Controls and Displays.....	7
Main URSA-II MCA Window.....	7
Menu Bar .....	7
File Menu .....	7
Utility Menu.....	8
Alarms.....	9
Misc .....	9
View Menu.....	9
Sound .....	10
Library.....	10
Transfer .....	10
Help .....	10
Button Bar.....	11
Hardware Status Bar .....	12
New User Hints Bar .....	12
Spectrum Display.....	12
Spectrum Status Bar.....	12
Acquisition Controls and Indicators .....	13
Spectrum Smoothing .....	14
Button Panel .....	14
Full.....	14
Hardware .....	14
ROI Panel .....	15
Efficiency .....	16
Peak-Based .....	17
ROI-Based .....	18
Sample Info.....	18
The “Print Preview” or “Report” Screen.....	19
Using the Library Editor.....	19
Using MCS Mode .....	21
Menu Bar.....	21
File Menu .....	21
Utility Menu .....	21
View Menu .....	22
Help.....	22
MCS Acquisition Controls and Indicators.....	22
MCS Analog Panel .....	23
Procedures.....	24
Calibrating a Detector with URSA-II.....	24
3	
Adjust Hardware Settings.....	24
Radiation Source and Detector .....	24
Input and Polarity.....	24
High Voltage .....	25

Threshold.....	25
Coarse Gain and Fine Gain.....	25
Shaping Time.....	25
Determining Initial Hardware Settings.....	25
Performing an Energy Calibration .....	26
Performing a Shape Calibration .....	28
Creating a Regions of Interest (ROI) Set .....	29
Manually Creating or Editing an ROI Set (“Manual Method”).....	30
Performing an Efficiency Calibration .....	31
Fine Tuning Hardware Settings.....	32
Service.....	33
Software License Agreement .....	33
Hardware Warranty .....	34

# Introduction

Thank you for purchasing a URSA-II (Universal Radiation Spectrum Analyzer-II). A lot of time and effort was spent trying to make the URSA-II hardware, software, and this manual as user-friendly and error-free as possible, but we cannot guarantee that no mistakes or omissions are present. All software (and manuals, for that matter) are “works-inprogress,” and will be updated from time to time. These updates will be posted on our website, <http://www.seintl.com>, where the most recent versions can be downloaded. There is also a link to the URSA-II support website under the Help menu.

If you find any errors or omissions or would like additional features in the instrument, please let us know.

## URSA-II MCA Minimum System Requirements

The required software to use the URSA-II has been tested on 32 and 64 bit Windows Operating Systems. This software has been tested on Windows 98, ME, NT, 2000, and XP.

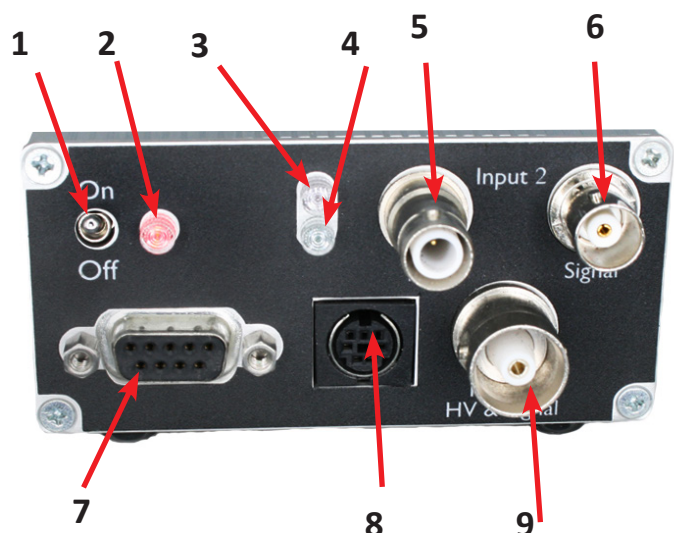
## URSA-II Technical Specification

- Internal 4096 channel successive approximation analog to digital converter.
- Internal positive high voltage supply, variable from 0 to 2000V. Negative high voltage supply is also available.
- URSA-II accepts positive, negative, or pre-shaped (positive) pulses. Pulse heights should not exceed approximately 5 volts.
- Uses 110V or 220VAC to 12V DC adapter (1.25A), or runs on 6 internally recharged NiMH “AA” batteries. Rechargeable battery life is approximately 4 hours, but will vary considerably based on the power requirements of the specific detector used. Battery charging circuitry can be suppressed via a switch in the battery compartment to allow the use of standard alkaline batteries.
- $\pm 12V$  DC power for preamplifiers is available through the 7-pin mini DIN connector. This connector can also provide +5V DC as well as logical outputs controlled by the software’s alarm functions.

# Hardware Description and Controls

## Front End Panel

1. On/Off Switch.
2. Power on, LED glows red when URSA is on
3. Red LED indicates URSA is connected to 12 Volts via power supply
4. Indicates charging state. Flashing Green indicates batteries are charging, solid green indicates the charge is complete..
5. SHV High Voltage connector . This provides the



high voltage output only for INPUT2 (i.e., will not accept a coupled signal).

6. BNC connector. This provides the signal input only for INPUT2 (i.e., does not carry high voltage).

7. DB9 connector. Communication port for connecting the URSA-II with a controlling device (e.g., computer).

8. DIN connector. This provides plus and minus 12-volt power if needed for detector preamplifiers. Also provides plus 5 volts as well as logical outputs coupled to ALARM0 and ALARM1 in the URSA-II MCA software.
9. S9- High Voltage C connector his provides high voltage and accepts coupled signal for INPUT1.

## **Back End Panel**

1. External Power input. Accepts 12VDC at 1.25A. Input voltage should never exceed 15V, as damage to the URSA-II could result.

## **Battery Compartment**

2. Battery Type Selection switch.

Recharge position: Allows NiMH batteries to be charged.

Standard position: The battery charging circuitry is disabled so non-rechargeable alkaline batteries can be kept in the URSA-II while connected to external power.

# **Powering the URSA-II**

## **AC Power Supply**

A 110VAC or 220VAC to 12VDC power supply is provided with the URSA-II. If you need to replace this for some reason, make sure the output is a regulated 12VDC capable of delivering at least 1.25A continuous current. The center pin is positive. Under no circumstances allow greater than 15VDC (or any AC voltage) into this connector or damage to the URSA-II will likely result.

## **Charging the Internal NiMH Batteries**

The URSA-II uses six “AA” 1800 mAh nickel metal hydride (NiMH) batteries. These are charged at either a slow or fast rate, determined batteries voltages.

The NiMH batteries should power the URSA-II for about four hours. Note however that this figure can change dramatically based on the current draw of the detector, high voltage, other hardware settings, ambient temperature, and age and condition of the batteries.

The expected useful lifetime of NiMH batteries under the best of circumstances is about one year.

Do not attempt to charge NiCad or Lithium Ion batteries in the URSA-II. Doing so will damage the instrument.

There is no problem with using the URSA-II while charging the batteries.

## **Using Alkaline Batteries**

It is not a problem using non-rechargeable batteries in the URSA-II. Remove the four screws on the back panel and replace the NiMH batteries, with AA alkaline batteries. However, you must be absolutely sure to switch the Charge Switch to the Standard position to bypass the URSA-II’s internal charging circuitry. Failure to do this may result in catastrophic damage to the URSA-II. Switch it back to the Recharge position when NiMH batteries are reinstalled.

## **Alternate External Power**

The URSA-II can also be powered from a number of other external sources away from AC power for extended periods(i.e., longer than the internal NiMH batteries can support). All that is required is that a DC voltage in the range of 12 to 15 volts is provided to the unit. DC power from most motor vehicles can meet these specifications, and the URSA-II can be powered directly by a motor vehicle cigarette lighter adapter.



The center pin of the External Power Input is positive. Incorrectly applying voltage to the URSA-II will likely damage it.

## Starting URSA-II for the First Time

The URSA-II hardware and MCA software are designed to connect URSA-II to a computer as painless as possible. The URSA-II must be connected to a serial port via a serial cable.

The computer can be using Windows 2000, Win 10 or 11. Connect the serial port of the URSA-II to a USB adapter.

It is not strictly necessary to have the URSA-II connected to start the software. If an URSA-II is not found, you will be given the option of starting in offline mode. Should you start by doing this, there won't be much to see or do with the software other than load previously acquired spectra (a couple have been included with the installation package).

### Initial Startup Steps

1. Load the URSA-II MCA software.
2. Attach the URSA-II to the computer via the serial connector. Also connect the detector.
3. Plug in and power on URSA-II.
4. Start the software. URSA-II MCA searches all COM ports for the URSA-II automatically.
5. A detector must be entered before URSA-II can be opened.

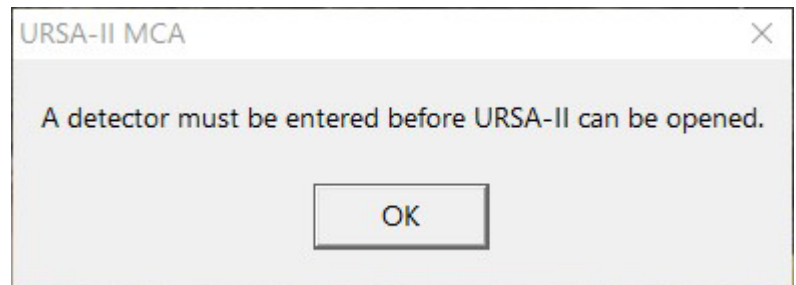
Many of URSA-II's calibration files are tied to a specific URSA-II /detector combinations.

6. Click the OK button.

7. The Add New Detector window will open and contain some default "generic" data the first time it is used. If you are in a hurry to try URSA-II out, you can accept these values by clicking the "Add" button. It is recommended, that you take a few moments and fill in the information for the detector you will be using. All fields must contain information. If you click the "Cancel" button, URSA-II MCA will revert to the "Select Detector" window, which will be blank. Your only options then will be to either close the application or go back to the Add New Detector window. Click the Add button after you have completed entering the information for your detector.

8. The "Select Detector" window is now displayed, showing the detector just entered. Click "Use This Detector."

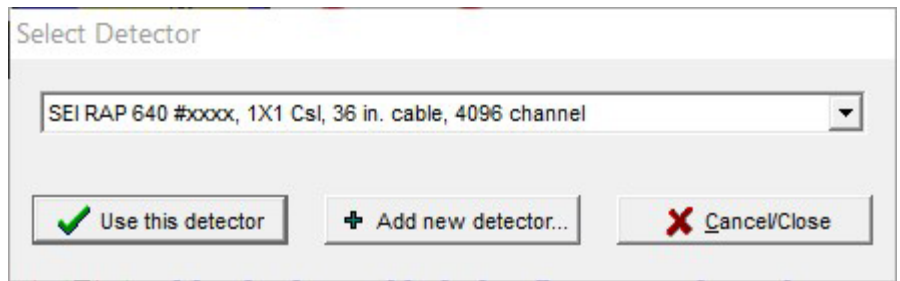
9. A window showing the serial number of the URSA-II and the number of the COM port being used is displayed. Click

A screenshot of the "Add New Detector" window in the URSA-II MCA software. The window has a title bar and contains several input fields and controls. At the top, it says "Add New Detector". Below that is a dropdown menu labeled "Base new detector on" with "Generic" selected. There are two text input fields: "Detector Manufacturer and Model(\*)" with "Generic" entered, and "Detector Serial Number(\*)" with "xxxx" entered. Below these are "Detector Description(\*)" (with "Generic") and "Cable Length(\*)" (with "36") and "Units(\*)" (with a dropdown set to "in."). There are checkboxes for "Zero HV when inactive" and "Ramp HV at 6 sec/100 V". A section for "High Voltage" shows "600 Volts" and a "Not to exceed" voltage of "1000 Volts". Below that is a "Coarse Gain" dropdown set to "X2" and a "Fine Gain" slider set to "0.500" with a scale from 1.000 to the right. At the bottom, there are fields for "Shaping Time" (1.0 µs), "Threshold" (50 mV), "Input and Polarity" (Input 1, Negative Polarity), and "Number of Channels(\*)" (4096). A note at the bottom states: "(\*) Note: These values CANNOT be changed once the detector has been added!". At the very bottom are two buttons: "+ Add" and "X Cancel".

“Yes” to enable the high voltage to the displayed value or “No” to start URSA-II MCA with the high voltage turned off. It is recommended that you enable the high voltage at this time unless you have some reason to believe that enabling the high voltage to the value displayed might damage the detector (e.g., the HV is higher than you think it should be or you don’t actually have the detector connected yet).

10. The Main URSA-II MCA window will now be displayed.

At this point, whether the first use or not, URSA-II MCA may appear to pause for a few moments while URSA-II MCA loads various associated files including the library file, the last used ROI set, energy and efficiency calibrations, and adjusts URSA-II’s on-board hardware settings.



## Functions, Controls and Displays

### Main URSA-II MCA Window

This window is the starting point for all URSA-II functions. This section describes in general terms the controls and displays on the main window. Virtually all functions can be performed using either the mouse or combinations of keystrokes.

### Menu Bar

Essentially all URSA-II MCA functions can be accessed through the menu bar, including those triggered by buttons on the Main URSA-II MCA window.

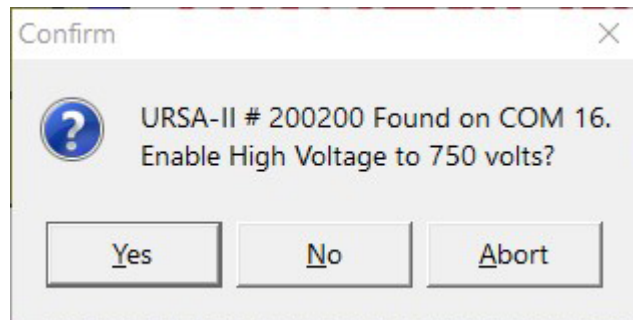
### File Menu

The first menu item (“Save Spectrum as File...”) is for saving a displayed spectrum to an URSA-II spectrum file (\*.usf).

The next two (“Save Spectrum and Load as Background...” and “Save Spectrum and Load to Static Display”) also save the spectrum but additionally either load the spectrum as the background spectrum or load it to the secondary spectrum display.

The next two menu items (“Capture Screen to Clipboard” and “Save Spectrum as Graphic...”) relate to the graphical representation of the spectrum, referred to in this document as the Chart. These allow the chart to be copied to the Clipboard (and subsequently pasted into a word processing or graphics program) or saved as a graphics file. These relate only to the Chart exactly as displayed, and do not carry over any other portion of the window. Note: If you want to capture an image of the entire window, use Alt + Print Screen to copy a picture of the active window to the clipboard, and then paste into another application.

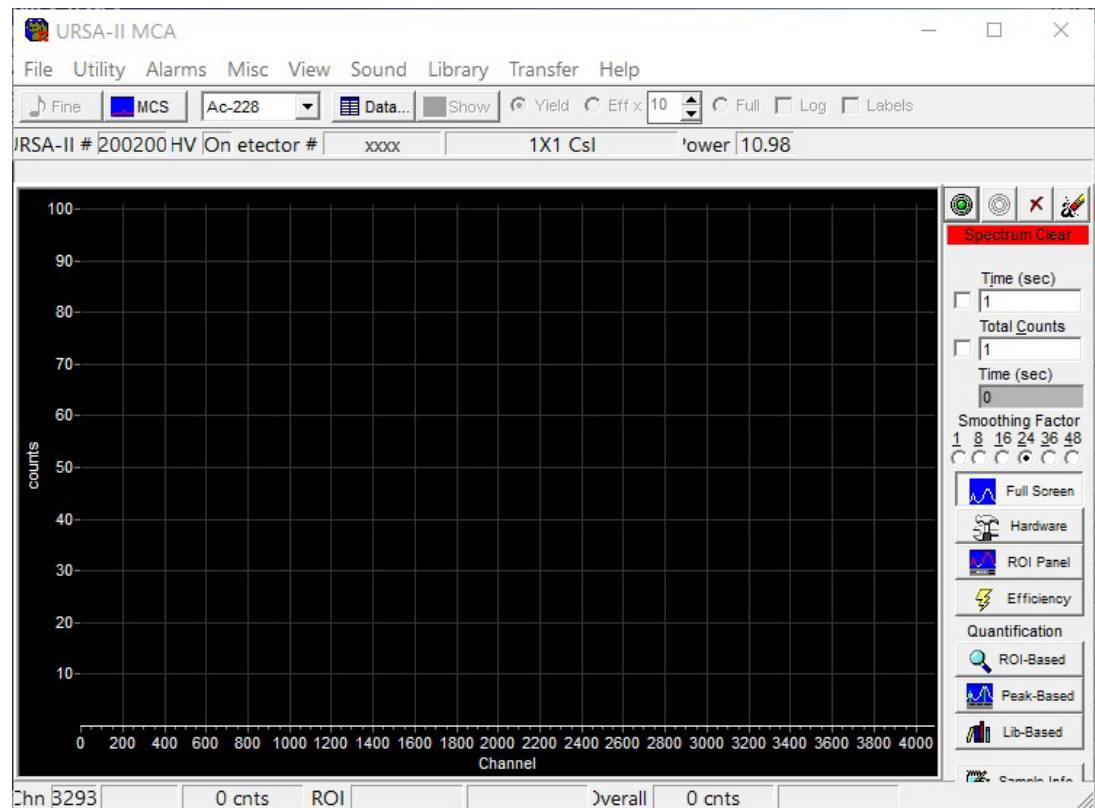
The next group of three menu items (“Load Spectrum to Live...”, “Load Spectrum as Background...” and “Load Spectrum to Static Display...”) concern the loading of stored spectra. Any previously saved spectrum captured using the same URSA-II and detector can be reloaded as a “live” spectrum for re-analysis or additional acquisition time, or as the background spectrum. Warning screens may be displayed if the spectrum was acquired using different hardware settings than are currently being used. Any spectrum in the \*.usf format can be displayed in the secondary spectrum.



Menu Bar  
Button Bar  
Hardware Status Bar  
New User Hints Bar

Spectrum Display

Spectrum Status Bar



Aquisition  
Controls and  
Indicators

Spectrum  
Smoothing

Button  
Panel

Note: If a saved spectrum is loaded to “live,” any spectrum currently displayed will be lost without warning unless you explicitly save it before loading the saved spectrum. Note: When a background is loaded, it will automatically be subtracted from the visual spectrum display until cleared or de-selected from the View menu. A loaded background spectrum will be subtracted from all subsequent analyses until the background spectrum is explicitly cleared, another one is loaded, or URSA-II MCA is closed.

The “Clear Background” menu item completely removes any loaded background file, not just from the visual display (e.g., the background data also will not be used in subsequent analysis of spectra).

The next three menu items relate to the printing of spectra currently displayed. “Printer Setup...” accesses the Windows™ printer settings dialog to alter paper type and layout, quality of the printing, etc. “Print Spectrum Preview (color)...” allows the user to view the printer output prior to printing, adjust margins, etc. before printing the chart. “Print Spectrum Preview (B+W)...” does the same, but alters the displayed colors to a black spectrum on a white background in order to save printer ink. This is the recommended method of printing charts.

The final menu item, “Exit,” closes URSA-II MCA. Warnings will occur if the currently displayed spectrum has not been saved, and the user must confirm that the program should close.

### Utility Menu

The first four menu items (“Start (or Restart) Acquisition,” “Stop Acquisition,” “Clear Spectrum,” and “Clear Spectrum and Start New Acquisition”) are for beginning, continuing, and stopping spectrum acquisition as well as clearing the currently displayed live spectrum. These items are identical in function to the four buttons along the top of the Acquisition Controls and Indicators portion of the screen. Note: No warnings are given if the current spectrum has not been saved!

“Detector Status...” displays a small window displaying current information about the detector being used, loaded ROI and library files, and the state of energy and efficiency calibrations. The “Detector...” menu item opens a submenu containing items that allow new detectors to be added, edited, or deleted, or for the detector being used by URSA-II to be changed without closing URSA-II MCA. A menu item (“Disable High Voltage”) is also present for enabling/disabling



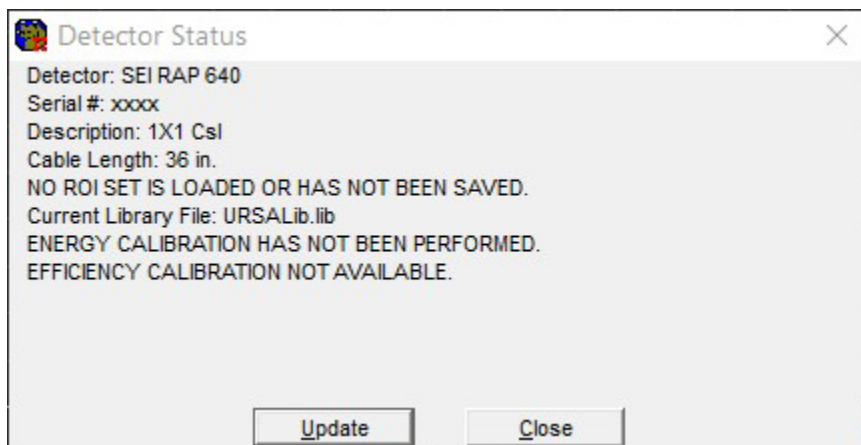
the high voltage to the detector (when HV is disabled, the menu item will read “Enable High Voltage”).

“Detector...” opens a sub-menu containing various utilities for working with detectors.

“Add...” allows new detectors to be added in the same manner as during URSA-II MCA startup, without the need to shut down and re-start URSA-II MCA.

“Remove Detector...” allows deletion of any detector entered except of the one currently in use.

“Select/Change...” automatically disables URSA-II’s HV supply to allow for safe changing of detectors. A new detector is selected from the list in a manner similar to that performed on



URSA-II MCA startup. Once a new detector has been selected, that detector’s settings (hardware settings, energy and efficiency calibrations, and the last-used ROI with that detector) are loaded and the HV enabled.

If “Disable High Voltage” is selected, URSA’s HV will be set to zero volts and the Hardware Status Bar will display that the HV is off. This menu item will change to “Enable High Voltage” and, if selected, will re-set the HV to the last-used hardware setting.

“Fine Tune...” opens a window to begin an automatic fine gain adjustment routine.

“Energy Calibrate...” opens a window for performing an energy calibration. See instructions on page 32.

“Shape Calibrate...” opens a window for performing an Shape calibration. See instructions on page 33.

The next seven [QQQ] menu items (“Full Screen” through “Sample Data Panel”) are identical in function to the seven buttons in the Button Panel on the lower right of the Spectrum Display. Each of these opens a panel for a specific function along the bottom of the Spectrum Display, except for “Full Screen,” which closes any displayed panel and restores the Spectrum Display to the largest possible. The functions contained in these panels are discussed in detail in the “Button Panel” section.

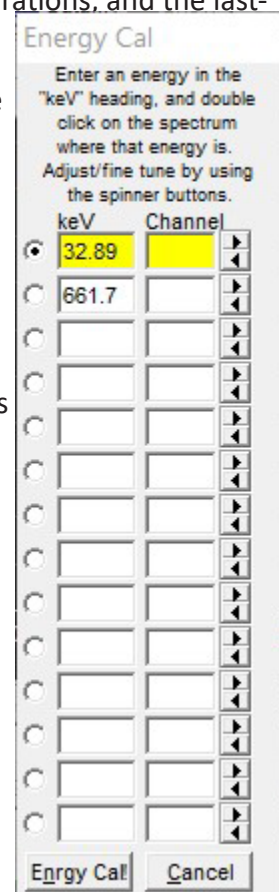
“Multi Channel Scaling Mode” disables and hides the Main URSA-II MCA window and opens a new window for performing multi-channel scaling. This function is discussed in detail in other sections of this Manual.

“Load ROI Set” is a redundant function (from the “ROI” panel) repeated here for convenience.

“URSA-II COM Port...” displays which COM port URSA-II is currently connected through. URSA-II can be used on COM 1 through COM 16.

## Alarms

“Alarm Settings...” opens a window where various alarms can be set. Alarms will only be active if “Enable Alarms” is checked. Alarms can be set for any ROI in the currently loaded ROI set or for the overall spectrum. Alarms can be set for either a gross count rate or for an increase in gross count rate over a specified period of



time. Any two alarms can also be attached to the logical alarm outputs on the Mini DIN-7 connector. The outputs go “high” (+5V) in an alarm condition.

“Show Alarm Window...” opens the same window that is automatically opened when any alarm condition occurs.

### **Misc**

This menu item is for special functions that do not easily fit into other categories. All of these items have been suggested or requested by users.

“Collect Multiple Sequential Spectra” opens a window where the URSA-II can be told to collect a fixed number of spectra (or to sample continuously). At the end of each acquisition, the spectrum file is saved with a sequential file name. Alternately (or, additionally), a brief ROI report can be saved.

“Simple ROI Report” generates a minimal ROI-based report containing primarily count rate data for each ROI.

“View Spectrum as Spreadsheet” first prompts the user to save the spectrum as a csv file (comma separated values), then opens the spreadsheet using your computer's default application for opening csv files. In most cases, this application is a spreadsheet program such as Microsoft Excel.

“Save Spectrum on End of Acquisition” will, when checked, save the spectrum to a file each time an acquisition is ended. This occurs when an acquisition is ended by any method. The files are saved to the “Spectra” subdirectory (off of whatever directory the URSA-II MCA software is located) with the filename based on the date and time in the format yyyy mm dd hh-nn-ss, where yyyy is the four digit year, mm is the two-digit month, dd is the two digit day of the month, hh is the two-digit hour in 24-hour format, nn is the two-digit minutes past the hour, and ss is the two-digit seconds past the minute.

“Disable ADC Corrections” will, when checked, disable the corrections made in the URSA-II's microcontroller to compensate for the analog-to-digital converter's differential non-linearity.

### **View Menu**

“Show New User Hints” enables/disables the New User Hints Bar, which displays a sentence or two briefly describing the function for any display or control the mouse cursor is currently over. Disabling (i.e., un-checking) this menu item hides the New User Hints Bar, making the Spectrum Display slightly larger.

“Show Hints” enables/disables displays of small pop-up windows containing a very brief description of a control or display when the cursor is over it for longer than one second.

When “Show Background Subtracted” is checked, the loaded background spectrum is visually removed from the live spectrum. It does not affect display of a static spectrum. Regardless of this visual setting, if a background has been loaded it is subtracted in all analysis functions. This menu item will be unavailable if no background spectrum has loaded.

When “Show ROIs” is checked, regions of interest from the current ROI file are colored differently than the rest of the spectrum (unless color settings are altered by the user). Additionally when this is checked, the ROI section of the Spectrum Status Bar will display the ROI name and number of total counts for the ROI currently under the cursor.

If “Spectrum Quick Grow” is checked, the left axis of the spectrum display will be set to a minimal value when the spectrum is cleared. This allows the fastest visual indication of peaks forming within the spectrum.

“Show Static Spectrum” will show/hide the static spectrum if one has been loaded. “Save Current Spectrum to Static Display” does just that, without removing or altering the current live spectrum. This function does not save the static spectrum in any way, and no analysis can be performed on a spectrum statically displayed; it is used for visual reference or comparison only.

In the next two menu items, the Primary and Static spectra display mode can be changed between a line display (default), a bar graph, or pixels.

“Grid Display Settings” allows a grid to be overlaid (or not) on the spectrum display. Additionally, axis labels can be displayed (or not).

“Show Isotope Data” and “Show Isotope Lines” are redundant functions (from the Button Bar) repeated here for convenience.

“Linear Y Axis” and “Logarithmic Y Axis” change the display of the left axis.

The “Colors” menu item opens a sub-menu allowing most display colors to be altered. The “Reset to Default Colors” menu item restores URSA-II MCA visual settings to the “first use” state. The default colors were selected to reduce eye strain, especially on large monitors, but may not be ideal for all users or purposes (e.g., printing). Use common sense in applying different colors. For example, if the Background color is set to be the same as the Main Spectrum color, the display will appear blank.

“Undo Zoom” gives a method for restoring the zoomed state of the spectrum to “none” without requiring the use of a mouse. The spectrum can only be zoomed by using the mouse to drag a rectangle (from upper left down to lower right) on the Spectrum Display. Dragging any rectangle from lower right up to upper left will unzoom the spectrum.

## ***Sound***

Three options exist for audible notification to the user that the acquisition of a spectrum has been completed. First is “No Sound,” i.e. the acquisition just stops. In the second, “Ring Once on Acquisition End,” a notification sound (the

Windows “default” sound, usually a “ding”) is made once on completion of an acquisition. In the third option, the sound repeats approximately every second until the user explicitly acknowledges the fact that the acquisition has completed by clicking the “Acknowledged!” button.

## ***Library***

“Load Library” allows the user to load one of the provided photon-emitting isotope libraries or one created by the user.

“Open Library Editor” opens an editor for modifying URSA-II library files. Using the library editor is discussed elsewhere in the manual.

## ***Transfer***

These functions allow easy copying of calibration files from one computer to another or to a disk for transfer. An example would be calibrating an URSA-II/detector combination on a desktop computer and transferring

that data to a laptop for field use. Transfer of these calibration files onto another computer should be performed using the separate “URSA-II MCA Cal File Xfer” program provided, while URSA-II MCA is not running. Functionally, this is identical to copying all of the files contained in the “CalFiles” subdirectory onto a floppy disk.

## Help

The “Help...” menu item opens the URSA-II MCA Help file. (Note: The Help file has not yet been distributed as of URSA-II MCA version 2.0.1)

The “URSA-II Support Website” is a hyperlink to (you guessed it!) the URSA-II support website.

The “About...” function opens a window containing information about URSA-II MCA and the URSA-II hardware. “Version Information...” simply displays the version number of the URSA-II MCA software.

## Button Bar

The left two buttons (“Fine” and “MCS”) on this portion of the Main URSA-II MCA window provides quick access to the Energy Calibration window and the Multi Channel Scaling mode. These functions are discussed in detail elsewhere in this manual.

The dropdown menu contains a list of all isotopes in the currently loaded library that are enabled. Selecting one of these isotopes allows data to be displayed as a table and/or as lines on the Spectrum Display.

Clicking the “Data” button opens a window that shows the name and half life of the isotope, as well as the specific data for all specific energies that are enabled in the library file. This window can be resized by moving the mouse cursor on an edge until the cursor becomes a double-headed arrow and dragging until the desired



size is achieved.

The window can be moved to any convenient location by clicking the blue bar and dragging. When this window is displayed, the button caption becomes “Hide,” and clicking on it (or on the “x” in the upper right corner) will close the window. The order of the display can be based on energy or yield, ascending or descending. Change this by clicking on the top of the relevant column. Note: The information in this display can be altered by using the Library Editor, detailed elsewhere in this manual.

The “Show” button will only be enabled if an energy calibration has been performed. Clicking the “Show” button displays marker lines at the energies where enabled library peaks for the current isotope should reside. When the marker lines are displayed, the button caption becomes “Hide.” If “Yield” is also selected, the heights of these lines are proportional to the yield for each energy. If an efficiency calibration has been performed, “Eff x” may be selected, which displays the line heights proportional to the yield for each energy times the efficiency at that energy times the value in the box to the immediate right. Selecting “Full” displays each energy line at the full height of the spectrum, regardless of yield.

Checking “Log” scales the heights of the energy lines against a logarithmic axis. Checking “Labels” displays a small box over each energy line displaying the energy of that line in keV.

## Hardware Status Bar

This section along the top of the spectrum display shows information about the hardware currently being used by URSA-II MCA. This includes the serial number of the URSA-II, the status of the high voltage supply (currently

Nuclide Data		
Ac-228		T <sub>1/2</sub> : 6.13 hours
Energy (keV)	Yield (%)	Comments
57.78	0.5014	
95.63	8.5312	MUL
129.08	2.77	
154.2	0.9418	



on or off), and the serial number and description of the current detector.

The “Power” section displays the voltage being supplied to the URSA-II power supply. This value is updated on opening of URSA-II MCA, at the start of each acquisition, and about every second or two during an acquisition. This value is not updated at any other time, i.e. when the URSA-II is sitting idle. If the voltage drops below 10 V a warning will be displayed, and at 9.5 V a message will be shown that the battery condition is now critical and batteries should be replaced immediately.

URSA-II # 200200 HV	On etector #	xxxx	1X1 Csl	'lower	10.99
---------------------	--------------	------	---------	--------	-------

## New User Hints Bar

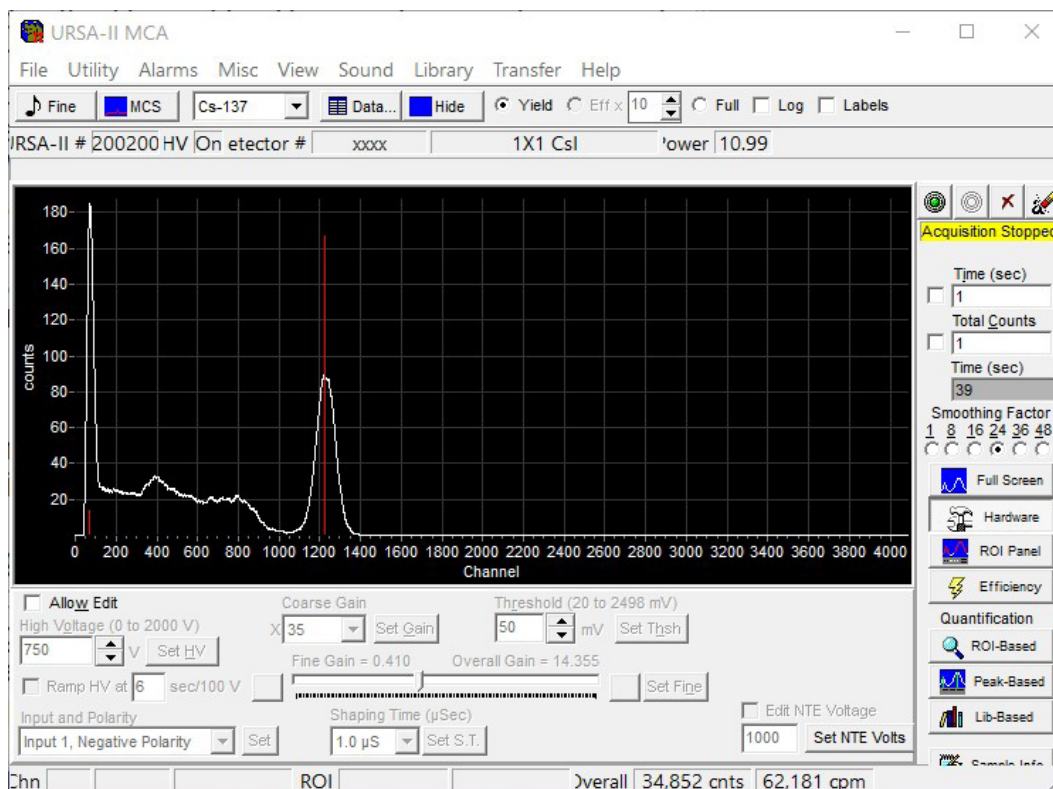
If “Show New User Hints” has been enabled in the View menu, a sentence or two appears here that briefly describes the function for any display or control the mouse cursor is currently over. Spectrum Display

## Spectrum Display

This area graphically displays the spectrum data collected. This area can be zoomed by using and clicking the mouse and “dragging a box” around the area of interest, from upper left down to lower right. This will not work if the starting or ending points of the box are outside the Spectrum Display area. Once a spectrum is zoomed, it can be panned by rightclicking the mouse on the spectrum display and dragging it. Un-zoom by dragging a box (any size) anywhere on the spectrum display from lower right up towards the upper left.

## Spectrum Status Bar

This section along the bottom of the main URSA-II MCA window displays information about the displayed spectrum, whether currently acquiring or not, and whether or not the spectrum has been loaded to a file.

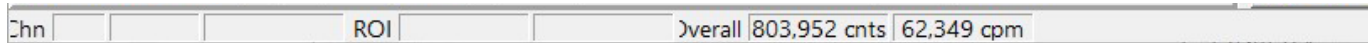


This display reflects no information about any secondary spectrum that is displayed.

The first group of three boxes (towards the left) reflect data for the individual channel over which the mouse cursor is located. These are the channel number, the energy associated with that channel (only if an energy calibration has been performed), and the number of counts in that particular channel. If a background



spectrum has been loaded, the count displayed will reflect the background-subtracted counts if “Show Background Subtracted” has been selected under the “View” menu.



The second group of two boxes (in the center) shows data for whatever ROI the cursor is over, if an ROI set is loaded and “Show ROIs” is checked under the “View” menu. If no ROI set is loaded, “Show ROIs” is not checked, or the cursor is not over an ROI, these boxes will be blank. The first of these two displays the name given to the ROI, and the second shows the total (integrated) number of counts in that ROI. If a background spectrum has been loaded, the count displayed will reflect the background-subtracted counts if “Show Background Subtracted” has been selected under the “View” menu.

The final two boxes (towards the right) display overall data for the spectrum. The first of these two displays the total number of counts for the spectrum and the second displays an approximation of the overall count rate based on an average of the last 20 seconds of spectrum data. The overall count data will not reflect background subtraction. The overall count rate box may display misleading data for approximately the first 20 seconds following the start of an acquisition.

## Acquisition Controls and Indicators

The four buttons along the top of this section control the acquisition of spectra. From left to right, these are “Start,” “Stop,” “Clear,” and “Clear and Restart.”

The Start button begins an acquisition. If a spectrum is currently displayed but is not currently accumulating the acquisition will re-start, adding data to the existing spectrum. If a spectrum is currently accumulating, this button will have no effect.

The Stop button ceases spectrum acquisition. No data is destroyed, and the acquisition can be restarted if desired. This button has no effect if the acquisition has previously been stopped.

The Clear button erases all data from the spectrum, and resets the elapsed time to zero. If a spectrum is currently acquiring, acquisition will stop. No warning is given before data is deleted.

The Clear and Restart button is equivalent to pressing the Clear button followed by the Start button, and is provided for convenience. Again, no warning is given before data is deleted.

Immediately below these buttons are two status displays. The top one of these will always be visible, and gives some information about the status of URSA-II. The text of this display may be:

“Spectrum Clear” (red background). Indicates that the spectrum display contains no data, and URSA-II is not acquiring data.

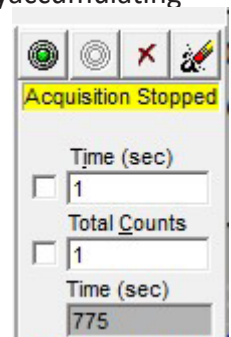
“Acquiring” (light green background). Indicates that a spectrum is currently accumulating.

“Acquisition Stopped” (yellow background). Indicates that URSA-II is not currently acquiring data, but the spectrum display contains data.

“Spectrum Loaded” (yellow background). Indicates that URSA-II is not currently acquiring data, but the spectrum display contains data that has been loaded to Live from a file.

The second (and lower) of these displays gives information about the background spectrum, and will only be visible if a background spectrum has been loaded. The text of this display may be:

“Bkgd Subtracted” (green background). Indicates that a background spectrum has been loaded and is currently



being subtracted from the visual spectrum display. It will also be subtracted from any spectral analysis performed, including peak searches.

“Bkgd Loaded” (green background). Indicates that a background spectrum has been loaded but is not being subtracted from the visual spectrum display. The background spectrum will still be subtracted from any spectral analysis performed.

Moving downward, the next object is the white “Time (sec)” input box, with a checkbox immediately to its left. If the checkbox is checked, URSA-II will stop acquiring a spectrum when the total counting time equals this value. Time units are in seconds. An acquisition cannot be started or continued if the checkbox is checked and the acquisition time equals or exceeds the amount of time in the input box. Typing in the Time box will immediately un-check it; pressing Enter on the keyboard after changing the Time value will re-check it.

Directly underneath the “Time (sec)” input box is the white “Total Counts” input box, with a checkbox immediately to its left. If the checkbox is checked, URSA-II will stop acquiring a spectrum when the total number of accumulated counts equals this value. An acquisition cannot be started or continued if the checkbox is checked and the total accumulated overall counts equals or exceeds the number of counts in the input box. Typing in the Total Counts box will immediately un-check it; pressing Enter on the keyboard after changing the Total Counts value will re-check it.

The final item in this area is the gray “Time (sec)” box. This displays the total counting time, in seconds, for the spectrum currently displayed. If a spectrum has been loaded to Live from a file, this display will reflect the amount of time for which that spectrum was counted.

## Spectrum Smoothing

The photomultiplier tubes used NaI(Tl) gamma detectors (as well as many others) do not supply a smooth continuum of energies. This fact is not apparent when the spectrum is displayed in 256 or so channels. URSA-II MCA’s 4096 channels of data can be filtered to give smoother representation of the energy continuum. Try using different values smoothing to get the “best looking” spectrum display. Smoothing is applied only the visual display and has no effect whatsoever in performing peak searches and analysis.



## Button Panel

The button panel provides access to the primary “workhorse” functions of URSA-II MCA. Each of these is described fully below.

### Full

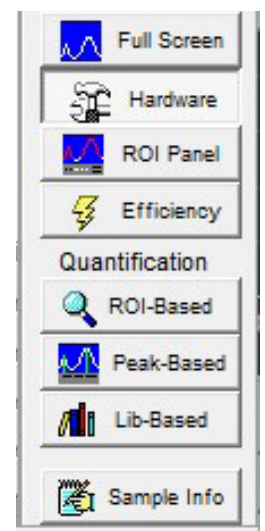
This hides all panels and makes the spectrum display as large as possible within the confines of the window borders.

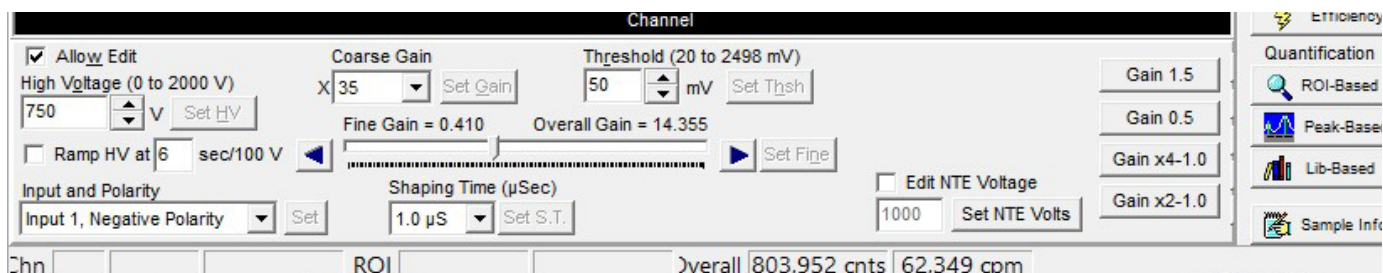
### Hardware

This displays the Hardware Panel for adjusting the URSA-II hardware controls. To adjust other Hardware settings, the “Allow Edit” checkbox must be checked.

High Voltage can be adjusted by either directly entering a number in the High Voltage input box or by using the up/down buttons immediately to its right. When entering the value directly, you can use any value between 0 and 2000 V, including decimal values. When using the up/down buttons, HV is increased/decreased in 1 V increments. After changing the displayed HV value, the “Set HV” button will become enabled. Pressing this button will apply the setting to the URSAII.

If an acquisition is currently underway, it will automatically pause while the new setting is applied then resume using the new setting.





If Ramp HV is not checked, the high voltage will change as instantaneously as possible. This is usually fine for most detectors. If needed, Ramp HV can be checked and the high voltage will always be changed at the rate displayed. This can range from 6 to 219 seconds per 100 volts.

The detector Input and Polarity can be selected from the dropdown menu. Input 1 is the series “C” connector where signal and high voltage are carried on the same line. Input 2 is the separate connectors for signal and high voltage, BNC and SHV respectively. If “Shaped Input, Positive Polarity” is used, either of the inputs can be used. Note: If a shaped input is used, Coarse and Fine Gain controls will have no effect on the spectrum input. Also, take care to ensure that shaped pulses are kept in the 0 to 5V range; an attenuator may be required.

Coarse Gain is adjusted using the “Coarse Gain” dropdown menu. The coarse gain ranges are x2, x4, x15, x35, x125, and x250. Coarse gain times fine gain equals overall gain. After changing the coarse gain value, the “Set Gain” button will become enabled. Pressing this button will apply the setting to the URSA-II. If an acquisition is currently underway, it will automatically pause while the new setting is applied then resume using the new setting.

Fine Gain can be adjusted either by clicking on the slider bar or by clicking the arrow keys to the right and left of the control. The fine gain can be adjusted in 255 steps from (approximately) x0.004 to (approximately) x1, and the approximate gain value is displayed immediately above and to the left. Overall gain (coarse gain times fine gain) is displayed immediately above and to the right. After changing the Fine Gain value, the “Set Fine” button will become enabled. Pressing this button will apply the setting to the URSA-II. If an acquisition is currently underway, it will automatically pause while the new setting is applied then resume using the new setting.

Use the Fine Gain control to perform small “nudges” to compensate for spectrum drift caused by temperature changes in the detector. If an even smaller shift in gain is needed, try adjusting the high voltage by tiny increments (including decimal values).

Threshold can be adjusted by either directly entering a number in the Threshold input box or by using the up/down buttons immediately to its right. When entering the value directly, you can use any whole number between 0 and 2498mV. When using the up/down buttons, Threshold is increased/decreased in 1 mV increments. After changing the displayed Threshold value, the “Set Thsh” button will become enabled. Pressing this button will apply the setting to the URSA-II. If an acquisition is currently underway, it will automatically pause while the new setting is applied then resume using the new setting. Note: High values of gain will likely necessitate increasing the threshold.

Shaping Time can be adjusted using the dropdown menu. Possible values are 0.25, 0.5, 1, 2, 4, 6, 8, and 10 µseconds.

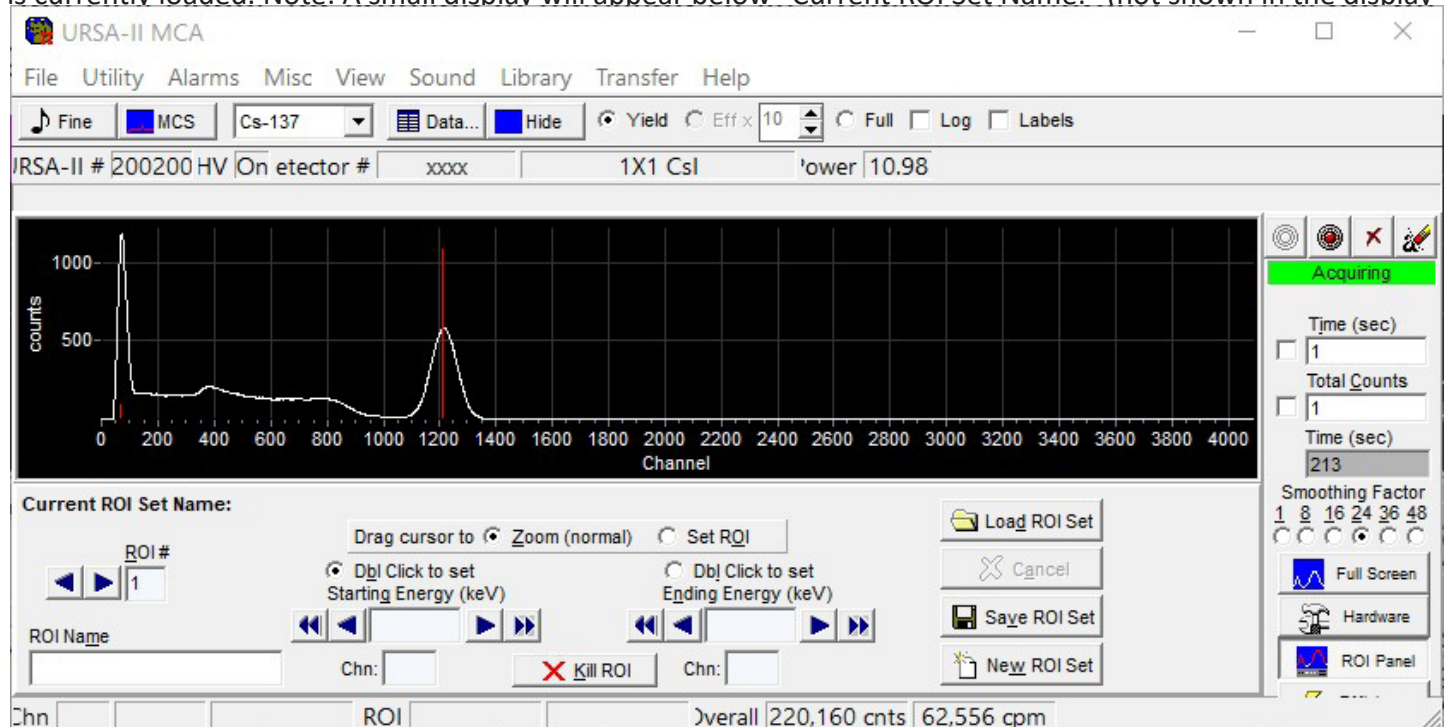
For the vast majority of cases, a shaping of 1 µSec is appropriate. After changing the shaping time value, the “Set S.T.” button will become enabled. Pressing this button will apply the setting to the URSA-II. If an acquisition is currently underway, it will automatically pause while the new setting is applied then resume using the new setting.

### **ROI Panel**

This displays the ROI Panel, for creating or adjusting ROIs (Regions of Interest). You will not be able to open this

panel until an energy calibration has been performed. The intricacies of this panel are discussed in detail below.

“Current ROI Set Name:” displays the filename of the currently loaded ROI set. If no file is displayed, no ROI set is currently loaded. Note: A small display will appear below “Current ROI Set Name:” (not shown in the display



above) that flags the fact that the current ROI set has been altered but not yet been saved.

The small panel (“Drag cursor to”) immediately below this normally has “Zoom (normal)” checked. This means that clicking and dragging on the spectrum will have the normal effect of zooming and un-zooming the display. If “Set ROI” is checked instead, clicking and dragging in the spectrum will define an ROI. After setting an ROI this way, the panel will revert to “Zoom (normal).”

Moving down and to the left is a small gray box displaying the current “ROI #” with “left” and “right” arrow buttons. This box displays which specific ROI is being edited within the greater ROI set. Click the arrow buttons to change the current ROI. The currently selected ROI is shown in fuchsia on the spectrum display. To create a new specific ROI, advance the ROI number to one that contains no data. Up to 50 ROIs may be defined within an ROI set.

Immediately below the “ROI #” is the “ROI Name” input box. Use this section to provide a descriptive name for each individual ROI within the greater ROI set. This name becomes the one displayed in the spectrum status bar, and is also used to identify individual ROIs in analysis reports.

Approximately in the middle of the ROI panel are two radio button controls, “Dbl Click to Set Starting Energy (keV)” and “Dbl Click to Set Ending Energy (keV).” When the ROI Panel is visible, double clicking on the spectrum will set either the lower or upper bound of an ROI (depending on which control is selected).

The controls immediately below provide a display of the lower and upper bounds of a specific ROI. Using the buttons with the single arrow will advance the boundary of the specific ROI up or down one channel; the buttons with the double arrow will advance the boundary up or down 10 channels. The energy associated with this channel will be updated in the input box.

The “Kill ROI” button will completely delete the currently selected specific ROI, without giving any additional



warning. “Load ROI Set” opens a dialog box to select an ROI set. If the current ROI set has not been saved since it was last altered, a warning will be displayed and you will be given an opportunity to save the current ROI set before continuing. If the ROI set is not explicitly saved, all changes will be lost when a new ROI set is loaded.

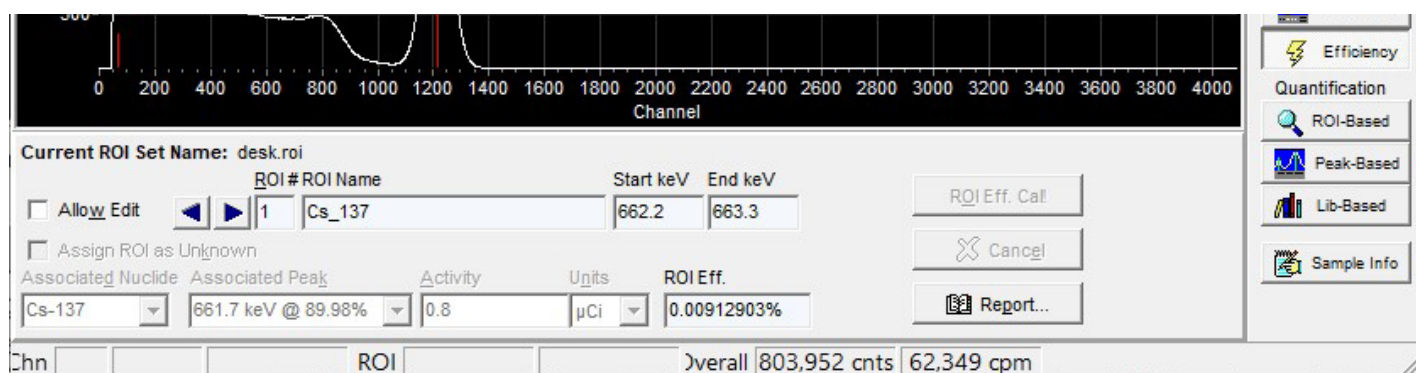
The “Cancel” button will only be enabled when the current ROI set has been altered or edited in any way since it was last saved. Using this function will re-load the current ROI set as it was last saved.

The “New ROI Set” button clears the current ROI set from URSA-II MCA (if it has not been saved, you will be given the opportunity to do this first) so that a new ROI set can be created. You will be prompted to first name the ROI set, which you must do in order to continue.

## Efficiency

This displays the Efficiency Calibration Panel. This efficiency calibration is based on an ROI set, but the same calibration is also used when performing peak- or library-based spectrum analyses. An ROI set, therefore, must be created and/or loaded before this panel is available. Efficiency calibrations are unique to specific URSA-II/ROI file/Detector combinations.

“Current ROI Set Name:” displays the filename of the currently loaded ROI set. Note: A small display will appear below “Current ROI Set Name:” (not shown in the display above) that flags the fact that the current ROI



set has been altered using the ROI Panel but not yet saved. It is not recommended that an efficiency calibration be performed using an unsaved ROI set.

If the “Allow Edit” box is checked, the controls on this panel will be unlocked for editing. If this box is not checked, the data for the last calibration can be viewed but not altered.

The arrow buttons will change the currently selected specific ROI within the greater ROI set and the data on this panel will reflect only that specific ROI, as will any modifications. The currently selected ROI will be displayed in fuchsia.

The gray boxes display specific ROI data, including the efficiency (as a percentage of counts detected per disintegration) if a calibration has been previously performed.

The “Assign ROI as Unknown” checkbox allows a specific ROI within an ROI set to be designated as one that is not contained in the efficiency calibration source being used.

The “Associated Nuclide” control contains a dropdown list of all enabled nuclides in the current library. Prior to performing an efficiency calibration, a nuclide must be assigned to each ROI within the ROI set by clicking on one of the items in the list. If the needed nuclide is not in this list, the library must be edited to enable this nuclide.

The “Associated Peak” control contains a dropdown list of all enabled peaks (for the nuclide selected as the



associated nuclide) in the current library. Prior to performing an efficiency calibration, one of these peaks must be assigned to each ROI within the ROI set by clicking on one of the items in the list. If a needed peak or multiplet is not on the list, the library must be edited to enable or add this peak or multiplet.

Enter the activity of the specific isotope in the “Activity” input box. This must be performed for all ROIs within the ROI set prior to performing an efficiency calibration. Use the “Units” dropdown list to assign units to the activity. Note: The activity units must be the same for all activities entered. Changing the units for one specific ROI will change the units assigned to all other ROIs within the ROI set.

The “ROI Eff. Cal!” button performs an efficiency calibration by applying the data entered on the Efficiency Calibration

Panel against the currently displayed spectrum. If no data is contained in the spectrum, or if all the fields are not filled in, rated and the efficiency calibration will be aborted.

The “Cancel” button will make any alterations made on the Efficiency Calibration Panel revert back to the ones used in the most recent efficiency calibration.

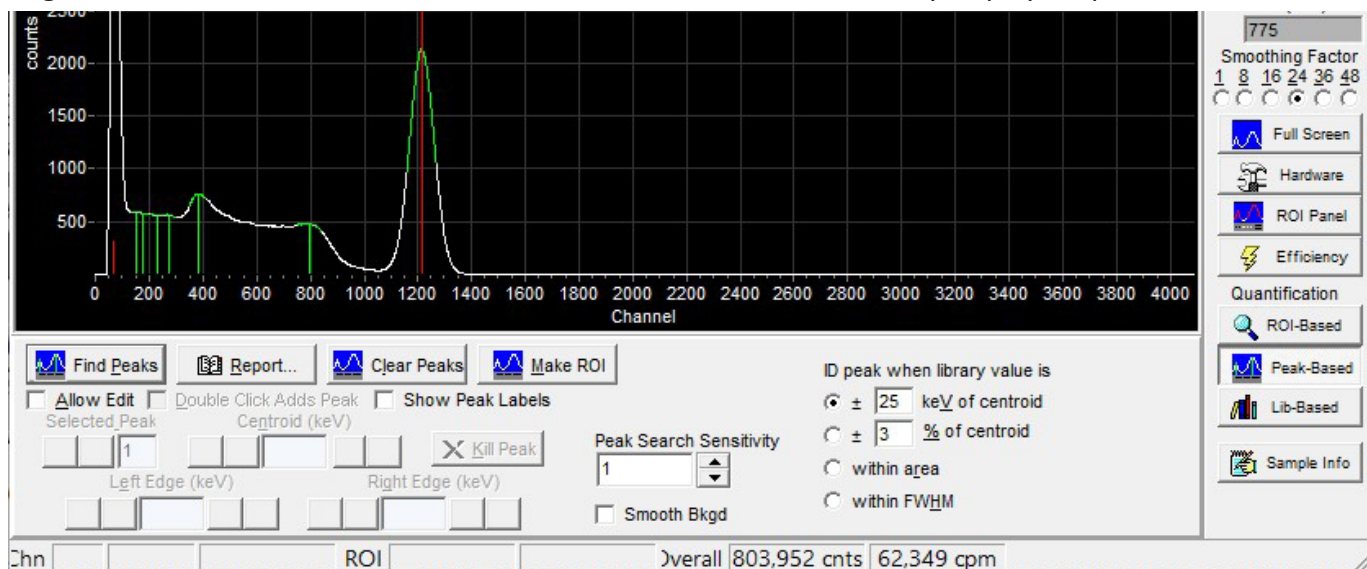
Every time an efficiency calibration is performed, a report is generated and stored in the URSA-II Cal Files directory.

This report can be viewed, printed, or saved by clicking the “Report...” button. Note: The contents of the report and use of the report window are discussed in detail in other portions of this manual.

### **Peak-Based**

This displays the Peak-Based Panel for performing peak searches, and for performing isotopic identification and peakbased quantitative analysis.

Clicking the “Find Peaks” button causes URSA-II MCA to search the currently displayed spectrum for identifiable



peaks.

These will be displayed on the spectrum in green, with a line indicating the peak centroid. The collection of found peaks acts a bit like a temporary ROI set, and the currently selected peak (which will be the leftmost one immediately following a peak search) will be displayed in fuchsia.

Clicking the “Report...” button makes URSA-II MCA perform a qualitative analysis. If an efficiency calibration has been performed, a quantitative analysis will also be preformed. This will then be displayed on a “report”

screen, where it can be viewed, printed, or saved. Note: The contents of this report and use of the report screen are discussed in detail in other portions of this manual.

The “Clear Peaks” button will erase all found peaks. The “Make ROI” button allows the user to take a group of found peaks and convert them to an ROI set.

The “Peak Search Sensitivity” control affects how “distinct” a peak needs to be before it is flagged as “found.” If it appears that too many peaks have been identified in a peak search, try lowering this value. And vice-versa...

The four radio buttons determine what method is used in identifying the nuclide associated with a peak. The top item will associate a peak with a nuclide if the library energy is within the stated energy range of the centroid and is the

default identification method, using  $\pm 3$  keV. The next item, if selected, will associate a peak with a nuclide if the library energy is within the stated percentage of the library energy. The third item, if selected, will associate a peak with a

nuclide if the library energy is anywhere within the area of the found peak. The fourth item, if selected, will associate a peak with a nuclide if the library energy is anywhere within the FWHM (full width at half maximum) calculated for the found peak.

There has been no computer program ever written that surpasses an experienced human eye at discriminating whether a given portion of a spectrum represents a peak or not. Therefore, URSA-II MCA allows the user wide latitude in editing (or ignoring) the results of the computerized peak search.

If the “Allow Edit” box is selected, the controls for editing the found peaks are enabled.

When “Double Click Adds Peak” is selected, double clicking on a portion of the spectrum will add a “found peak.” This new peak is treated as the others found by the computerized search, and this method of adding “found peaks” may be used instead of or as a supplement to the computerized search.

When “Show FWHM” is checked, the FWHM (full width at half maximum) calculated for each found peak will be displayed on the spectrum.

The arrow buttons below “Selected Peak” change the currently selected found peak, which is indicated by the displayed number and highlighted in fuchsia in the spectrum display. Data displayed and edits made will apply only to the currently selected found peak.

Values for the Centroid, Left Edge, and Right Edge can be altered by using the single and double arrow buttons. The single arrow buttons will move the relevant value up or down the spectrum by one channel, and the double arrow buttons will move the relevant value up or down the spectrum by 10 channels. The current value will be displayed (in keV) in the associated gray box.

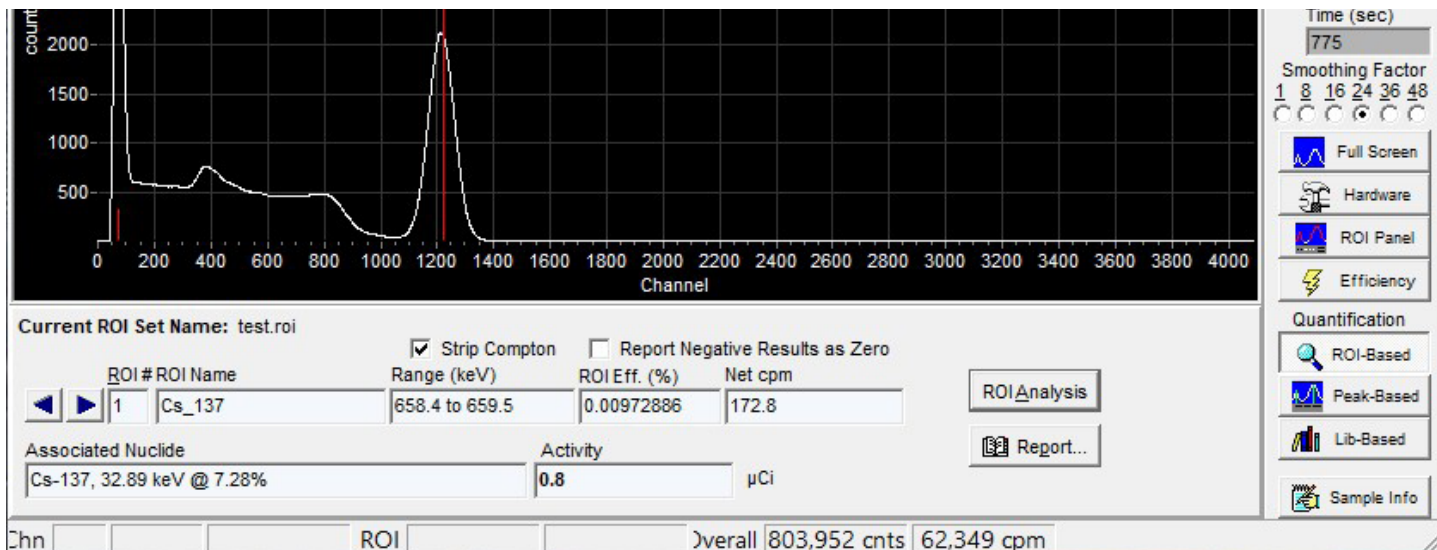
Finally, the “Kill Peak” button will permanently delete the currently selected found peak (whether found by the computer search or manually assigned).

### ***ROI-Based***

This displays the ROI-based Quantitative Analysis Panel.

Clicking the “ROI Analysis” button performs an ROI by ROI analysis of the currently displayed spectrum, calculating activities for each ROI. A summary of this data is displayed for each ROI. Change the currently selected ROI (indicated by fuchsia on the spectrum display) by clicking the arrow buttons.

Clicking the “Report...” button displays the detailed results of the ROI-based quantitative analysis. From the “report” screen, this data can be viewed, printed, or saved. Note: The contents of this report and use of the

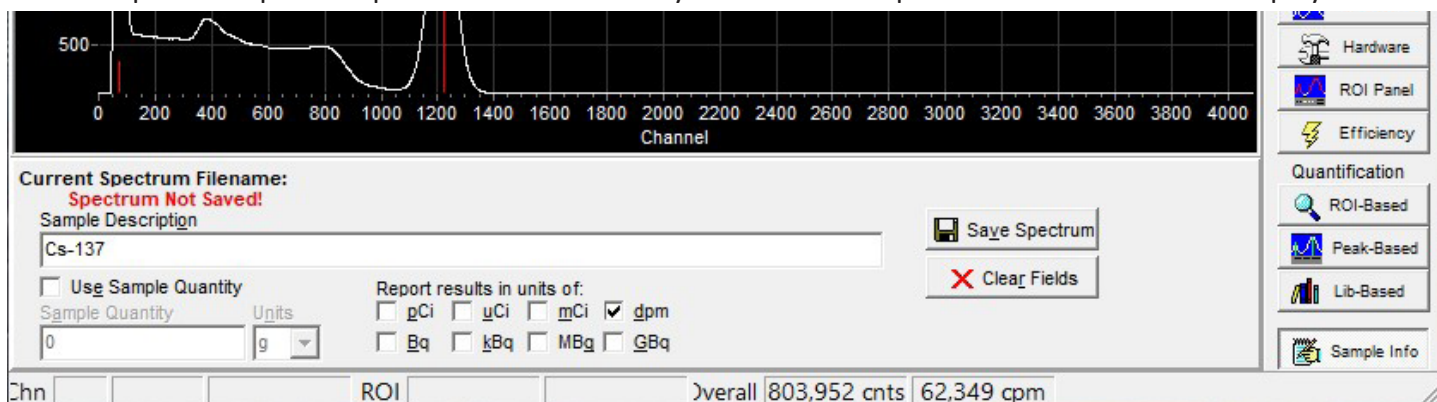


report screen are discussed in detail in other portions of this manual.

### Sample Info

This displays the Sample Data Panel for entering sample descriptions and quantities.

The “Sample Description” input box allows the entry of a brief description or note. This will be displayed in all



subsequent analyses and reports generated, and will be saved with the spectrum file.

If “Use Sample Quantity” is checked, two controls will be enabled that allow entry of a sample quantity and associated units. These values will be saved with the spectrum, and used and displayed in subsequent analyses.

Eight checkboxes with radiological units are displayed. Any combination of these may be checked, and activity results in subsequent reports generated will be displayed in all of the units selected. If none of these are checked, no quantitative analysis results will be displayed in subsequently displayed reports.

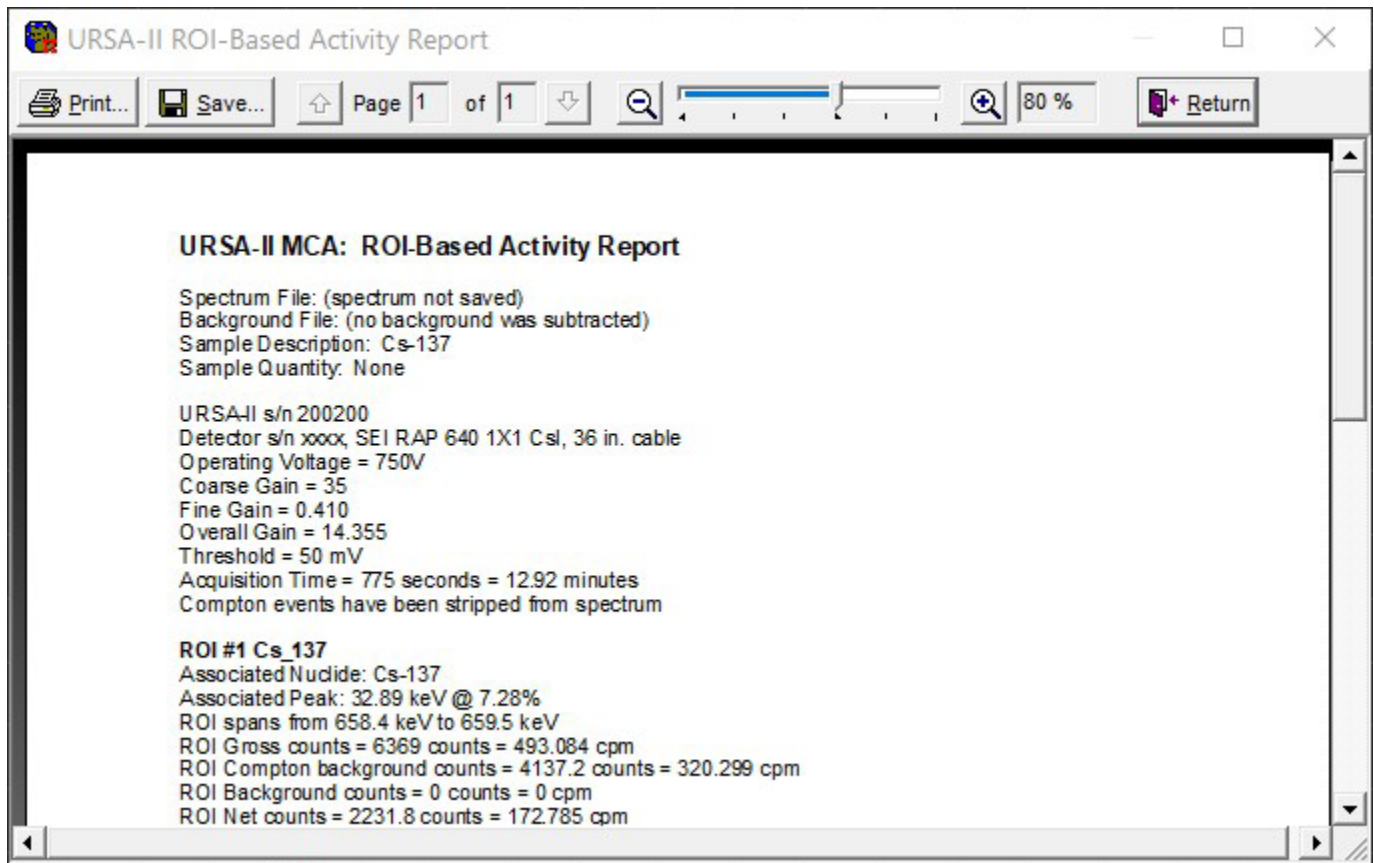
The “Save Spectrum” button repeats the function under the “File Menu.” It is also included here for convenience. The “Clear Fields” button deletes the data entered in the Sample Description and Sample Quantity.

### The “Print Preview” or “Report” Screen

This screen is used to display, save, and print all reports generated by URSA-II MCA.

The “Print” button will send the report to any printer via the Windows operating system. The report should print exactly as displayed.

The “Save” button allows the report to be saved as either a rich text file (rtf) or a plain text file (txt). Both



formats can be used with most word processors; saving as an rtf keeps the look of the file exactly the same as displayed (i.e., changes in font sizes, bold, tabs).

The up and down arrows are the same as page up and page down keys, which can also be used.

The “-” and “+” magnifying glasses, along with the slider, allow the size or zoom of the report display to be changed.

The “Return” button closes the report window.

## Using the Library Editor

Two libraries are distributed with URSA-II MCA, “UrsaLib” and UrsaLib Full. As a general rule, UrsaLib is intended for NaI(Tl) detectors, and UrsaLib Full is intended for detectors with higher resolution. Both were created from the same information, contained in “Radioactive Decay Data Tables” by David C. Kocher, Report DOE/TIC-11026. The data was originally formatted for computer by Grove Engineering from information provided by RSIC. UrsaLib Full contains all information, while UrsaLib has had photons with lower energies and yields that are unlikely to be seen by NaI(Tl) detectors removed to improve performance. Both libraries contain many calculated multiplets as an aid. These can, of course, be edited or disabled.

Either library can be edited and saved under a different name, creating a new library file. Isotopes and specific photon energies can be added, edited, or deleted.

The Library Editor can be opened by selecting “Open Library Editor...” under the “Library” menu from the URSA-II MCA main screen.

When the Library Editor is opened, no Library is initially loaded for editing. Click on the “Open Lib.” button and select a library file for editing.



URSA Library Editor

File Utility Help

Isotope  Library File Being Edited: ☐ Enabled ☐ Disabled

☐ Allow Edit of Nuclide Name and Half Life

editElement  0

Isotope	Use	Pri.	Sec.	Energy (keV) / Yield (%)	Comments

Once a library has been opened, select an individual isotope from the drop down list. All isotopes in the Library are displayed in the list, and those that are currently enabled are shown with an asterisk. After an isotope is selected, the screen will update to display that isotope's information.

Use the "Enabled" or "Disabled" radio buttons to determine whether that isotope will be used in the library. Only enabled isotopes will be available in URSA-II MCA.

Use the "Save Lib." button to save the library as it exists, reflecting any changes that have been made. This can also be used to save the library under a different name.

The "Cancel" button can be used to close the Library Editor without saving any changes that have been made since the last save. If no changes have been made since the last save, the button will read "Close."

Check "Allow Edit of Nuclide Name and Half Life" to allow editing of those values, if needed.

Use the "Add Energy" button to add a photon energy to the currently displayed isotope.

Click on any photon energy in the grid and use the "Kill Energy" button to completely delete that photon energy from the currently displayed isotope.

Use the "Add Isotope" button to add a new isotope to the current library. One photon energy must also be added in order to add the isotope.

Add New Isotope to Library

Isotope Abbreviation  Element Name

Half Life  Units

Energy (keV)  Yield (%)

Comments

Click on the "Kill Isotope" to completely delete the entire isotope currently displayed from the library.

The grid contains a display of each photon energy for the currently selected isotope, and they can be edited here also.

The fields are as follows:



Isotope Display of the isotope abbreviation. This should be the same for each displayed photon.

Use Checkboxes that indicate whether that particular photon or energy will be used (assuming the isotope itself is also enabled).

Pri. This column of radio buttons is used to indicate which energy is designated as the “primary peak” for the isotope.

The primary peak MUST be present in a spectrum (in addition to the secondary peak) in order to positively identify the isotope, and activity will be calculated based in the primary peak. Therefore, the energy with the highest yield is usually designated as the primary peak. It is acceptable to designate the same energy as both the primary and secondary peaks, but the energy must be enabled.

Sec. This column of radio buttons is used to indicate which energy is designated as the “secondary peak” for the isotope. The secondary peak MUST be present in a spectrum (in addition to the primary peak) in order to positively identify the isotope. It is acceptable to designate the same energy as both the primary and secondary peaks, but the energy must be enabled.

Energy (keV) This column displays each specific energy, in keV, for the currently selected isotope.

Yield (%) This column displays the specific yield (or abundance) for each specific energy, expressed as a percent (or photons at that energy per 100 disintegrations).

Comment This column provides a section for users to enter a comment or note regarding the particular energy. For example, all multiplets contain “MUL” in the comment field.

Once a Library has been edited and saved, it must be specifically loaded into URSA-II MCA (using “Load Library...” under the Library menu) for the changes to be seen.

## Using MCS Mode

The Multi Channel Scaling mode is used for the application of watching or recording changes in count rate over time. An analog meter-style display also shows the current count rate. MCS mode allows you complete control over how the data is accumulated and displayed.

### Menu Bar

#### *File Menu*

The first menu item, “Save Chart as csv...” is for saving the all the data collected in the current acquisition to a comma separated value (csv) file. Csv files can be opened by most spreadsheet and word processing programs.

The next two menu items (“Capture Chart to Clipboard” and Save Chart as Graphic...”) relate to the graphical representation of the display. These allow the chart to be copied to the Clipboard (and subsequently pasted into a word processing or graphics program) or saved as a graphics file. These relate only to the Chart exactly as displayed, and do not carry over to any other portion of the window. Note: If you want to capture an image of the entire window, use Alt+PrintScreen to copy a picture of the active window to the clipboard, then paste into another application.

The next two menu items relate to the printing of the chart currently displayed. “Printer Setup...” accesses the Windows printer settings dialog to alter paper type and layout, quality of the printing, etc. “Print Chart as Graphic” allows the user to view the printer output, adjust margins, etc. and print the chart.

“Exit” closes the URSA-II MCS window and returns to the URSA-II MCA main screen.

#### *Utility Menu*

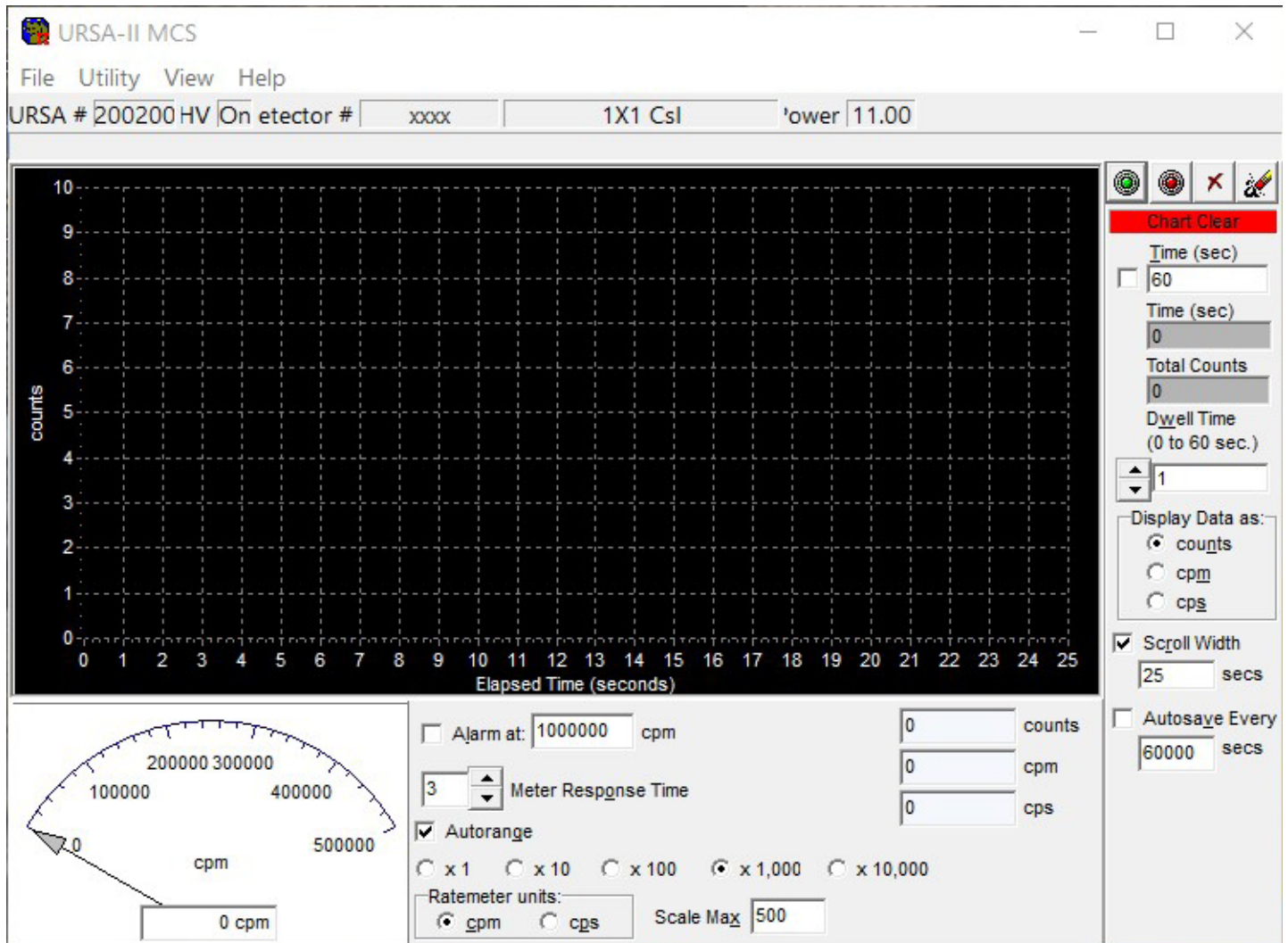
The first four menu items are self-explanatory, and their functions are identical to the four buttons near the

upper right of the chart display.

Select “Low Activity Sample” when working with very low count rates (e.g., less than about 30 counts per minute) to allow the option to save files that only contain non-zero values. Performance may suffer if this option is used with high count rates.

### View Menu

“Show New User Hints” enables/disables the New User Hints Bar, which displays a sentence or two briefly describing the function for any display or control the mouse cursor is currently over. Disabling (i.e., unchecking)



this menu item hides the New User Hints Bar, making the Spectrum Display slightly larger.

“Show Hints” enables/disables displays of small pop-up windows containing very brief description of a control or display when the cursor is over it for longer than one second.

The “Show Trace as...” menu item opens a sub-menu allowing the chart trace to be displayed as a line, as points, as a line with points (the default), bars, or as an area graph.

The next three menu items (“Chart Background Color...”, “Chart Trace Color...” and “Chart Labels Color...” allow the referenced display colors to be altered. The “Reset to Default Colors” menu item restores URSA-II MCS visual settings to the “first use” state. The default colors were selected to reduce eyestrain, especially on large monitors, but may not be ideal for all users or purposes (e.g., printing). Use common sense in applying different colors. For example, if the Chart Background color is set to be the same as the Chart Trace color, the display will appear blank.

## **Help**

The “Help...” menu item opens the URSA-II MCA Help file. (Note: The Help file has not yet been distributed as of URSA-II MCA version 2.0.2)

The “About...” function opens a window containing information about URSA-II MCA and the URSAII hardware. “Version Information...” simply displays the version number of the URSA-II MCA software.

## **MCS Acquisition Controls and Indicators**

The four buttons along the top of this section control the acquisition of spectra. From left to right, these are “Start,” “Stop,” “Clear,” and “Clear and Restart.”

The Start button begins an acquisition. If data is currently displayed but is not currently accumulating the acquisition will re-start, adding data to the existing chart. If a spectrum is currently accumulating, this button will be displayed with a red X over it, and will be unavailable.

The Stop button ceases data acquisition. No data is destroyed, and the acquisition can be restarted if desired. This button has no effect if the acquisition has previously been stopped.

The Clear button erases all data from the chart, and resets the elapsed time to zero. If a spectrum is currently acquiring, acquisition will stop. No warning is given before data is deleted.

The Clear and Restart button is equivalent to pressing the Clear button followed by the Start button, and is provided for convenience. Again, no warning is given before data is deleted.

Immediately below these buttons is a status display showing the current status of data acquisition.

Moving downward, the next object is the white “Time (sec)” input box, with a checkbox immediately to its left. If the checkbox is checked, URSA-II will stop acquiring data when the total counting time equals this value. Time units are in seconds. An acquisition cannot be started or continued if the checkbox is checked and the acquisition time equals or exceeds the amount of time in the input box. Typing in the Time box will immediately un-check it; pressing Enter on the keyboard after changing the Time value will re-check it.

Directly underneath the “Time (sec)” input box are two displays. The first shows the total elapsed time in the data acquisition, and the second shows the total number of counts collected.

The next item down is the “Dwell Time” control. This determines how frequently data is posted on the chart, and what period of time each data point represents the sum of. This value can be altered from 1 to 60 seconds. This control can be changed while an acquisition is in progress.

Below that is a box labeled “Display Data as” where the left axis chart units can be changed between counts (accumulated in each dwell time period), cpm or cps (averaged over the dwell time period). This cannot be changed after an acquisition has been started until the chart is cleared.

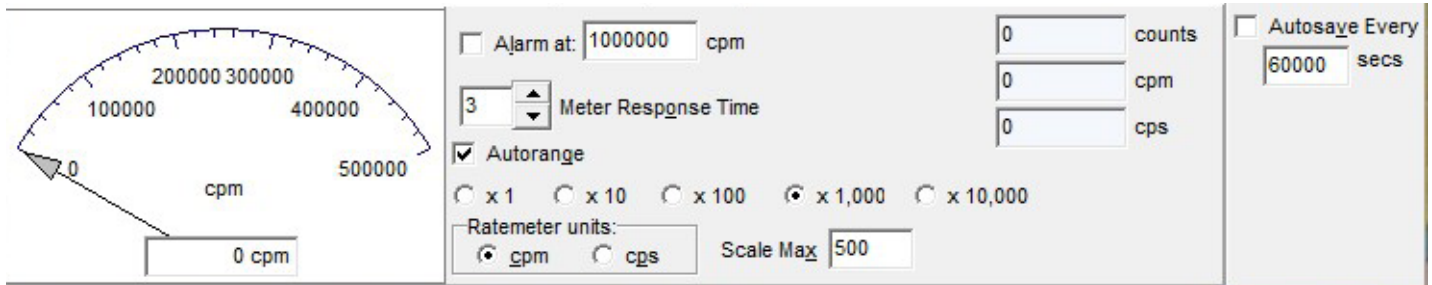
The next set of controls (“Scroll Width”) affect the bottom axis of the chart display. If “Scroll Width” is checked, then the width of the bottom axis will be the number of seconds displayed in the input box immediately below. If Scroll width is not checked, then the width of the bottom axis will reflect all of the data points collected. Note that performance may suffer if a very large number of data points (1500 or so) are displayed.

The controls in this area are the autosave features. If “Autosave Every” is checked, then the accumulated data will be saved to sequential files at a frequency determined by the value in the box immediately below. If “Low Activity Sample” is checked under the Utility menu, you will be able to choose whether to autosave just the low activity data (i.e., only non-zero values) or both.

## MCS Analog Panel

This panel displays an analog-style meter movement of the current acquisition. The settings for this panel can be altered independently of the chart display.

If “Alarm at:” is checked, the analog display will turn red and an audible indicator will be played if the count



rate exceeds the value contained in the input box. The alarm will reset when the count rate falls below the alarm level, or when the box is unchecked.

“Meter Response Time” changes the number of seconds of data over which the analog display is averaged. Higher values will result in a “smoother” meter action, but slower response to changes in the count rate. This can be varied between 1 and 60 seconds.

If “Autorange” is checked, the meter scale will change automatically based on the count rate.

The “Scale Max” changes the base value for the upper limit of the analog display.

The “x 1” through “x 10,000” are scale ranges for the analog display.

“Ratemeter units” allows you to change the analog display between units of counts per minute (cpm) or counts per

## Procedures

### Calibrating a Detector with URSA-II

In order to use URSA-II with a given detector, the following must be done (in this order):

1. Adjust Hardware Settings.
2. Perform Energy Calibration.
3. Perform a Shape Calibration. Following this step, URSA-II is ready to provide qualitative analysis.
4. Create a “Regions of Interest” (ROI) Set. This is in preparation for efficiency calibration, which must be coupled to an ROI set.
5. Perform Efficiency Calibration. Once an efficiency calibration has been performed, URSA-II is ready to perform quantitative analysis.

### Adjust Hardware Settings

Hardware settings are used to adjust input and polarity, high voltage (HV), threshold, gain, fine gain, and shaping time.

Hardware settings are unique to each URSA-II /detector combination. The specific settings are loaded when a specific detector is selected. If you intend to use the same detector at different hardware settings, you can define separate detectors with different descriptions.

Since URSA-II was designed to work with essentially any radiation detector (or more specifically, in the case

of URSA-II MCA, essentially any gamma detector), the software cannot make any assumptions regarding the operating characteristics of the detector and therefore cannot contain automated hardware adjustment. Discovering the appropriate hardware settings for a particular detector is essentially a trial-and-error process. Fortunately, this process is neither difficult nor time consuming.

The process for determining appropriate hardware settings consists of placing a known radiation source of modest activity in front of the detector, adjusting one or more of the hardware settings, and beginning an acquisition. Repeat this process until a satisfactory spectrum is achieved. Each of the components of this process is discussed in slightly more detail below.

### ***Radiation Source and Detector***

For most gamma scintillation detectors that will be used with URSA-II, an approximately 1  $\mu\text{Ci}$   $^{137}\text{Cs}$  source is probably the best to use in performing the hardware setup. It provides two distinct peaks; a low-energy multiplet centered around 32.89 keV and a higher energy gamma at 661.65 keV. Another isotope can be used provided that the expected spectrum is known, but the procedures in this manual assume that  $^{137}\text{Cs}$  will be used. Whatever source is used, be cautious of using one with too great an activity. Many scintillation detectors, especially those originally designed for hand-held battery powered instruments have a high resistance dynode string (e.g., 120 Mohms) to minimize the current draw from the HV power supply. Unfortunately, this also has the effect of causing peaks to shift as a function of the incoming count rate. If you are purchasing a new detector for use with your URSA-II, it is recommended that a dynode string of about 6 Mohms be specified. The general thumb rule for spectroscopy is that lower is better, but do not use a detector with a dynode string less than 4 Mohms. If you are using a detector with a high resistance dynode string, the best way around this is to perform energy and efficiency calibrations at approximately the same count rate as the samples you will be analyzing.

### ***Input and Polarity***

The URSA-II has two detector inputs. Input 1 is the series “C” connector right next to the DB9 serial connector. This input has the signal and the high voltage coupled just like on most hand-held instruments. If your detector has only one connector, Input 1 is the one you should use. If your detector has two connectors, one for high voltage and one for the signal, you should use Input 2. The SHV connector carries the high voltage for Input 2 and the BNC connector accepts Input 2’s signal. Only one of the inputs should be connected to a detector at any one time.

Most single-connector detectors produce negative pulses, so negative polarity should be chosen. Many two-connector detectors (especially those with internal preamplifiers) produce positive pulses, but this cannot be taken for granted.

You can either consult the detector manufacturer as to the pulse polarity or just try both polarities and see which one works.

If your detector requires voltage for an internal preamplifier, the URSA-II can provide positive and negative 12 volt DC through the mini DIN-7 connector and the (included) adapter. The pin out of this adapter follows the NIM standard [QQQ put in pin voltages] and should couple directly to the detector.

The URSA-II can also accept pre-shaped positive pulses through either input. Note: pulses exceeding about 5V in magnitude (whether positive or negative) will be clipped. If you use this feature an attenuator may be required.

### ***High Voltage***

If you have past experience with the detector, the voltage at which it was operated is a good starting point for the URSA-II. This is also often referred to as “bias voltage.” Alternately, you can check with the detector’s manufacturer for an approximate bias voltage or at least a not-to-exceed voltage. Failing that, you can just



increase the high voltage to the detector until you get a decent looking spectrum.

The detector bias voltage used for spectroscopy is generally a bit lower than the “plateau” voltage used in many grosscount instruments.

With scintillation detectors the bias voltage also provides gain, so essentially the same spectrum can be obtained using a lower bias voltage and higher gain or a higher bias voltage and a lower gain. If the bias voltage is higher than optimal, the spectrum will appear distorted.

### ***Threshold***

The threshold, sometimes called input sensitivity or discrimination, is the minimum pulse height in millivolts (mV) that will be recorded by URSA-II as a count. Since the URSA-II can accept pulses of either polarity, the threshold is entered as an absolute value. This can range from 0 to 2047 mV.

Photomultiplier tubes, cables, AC power, and the power supply and other circuitry within the URSA-II all generate electronic noise that can be erroneously interpreted as counts. This noise tends towards the low energy region of the spectrum and can be removed by setting the threshold sufficiently high to block it. For most detectors, a threshold of 20 mV is about as low as is practical. A threshold of 50 mV is usually a good starting point. If a large peak occurs toward the left of the spectrum, (i.e., one that overpowers “real” peaks in the spectrum), the threshold should be adjusted to a higher value. If you desire to observe the lower energy portion of the spectrum, the threshold can be brought closer to zero until the noise becomes apparent. Changes to the HV or gain may cause the location of the noise line to shift, requiring a readjustment of the threshold. The two highest gain ranges will usually require a threshold to be set in the 100 to 200 mV range unless the detector is unusually “quiet.”

### ***Coarse Gain and Fine Gain***

The coarse gain and fine gain controls are used to increase the signal from a detector to the point where it can be displayed usefully as a spectrum. These two controls are used together to create an overall gain. The overall gain is generally the value you should follow.

It is worth mentioning that the gain settings are arbitrary and not absolute. In other words, if you put in a pulse of exactly 1000 mV with an overall gain of x1, the pulse will not necessarily appear in channel 1000. Similarly, a positive pulse of exactly 1000 mV will not necessarily appear in the same channel of a negative but otherwise identical pulse. This is normal and is only mentioned here so no surprise is experienced if you put a pulse generator on the URSA-II. Relative gain values are reasonably accurate.

You should avoid using the extreme low end of the fine gain control to the extent possible. For example, you can obtain an overall gain of x3.391 with a coarse gain of x2 and a fine gain of x0.848. You can obtain the nearly the same overall gain value using a coarse gain of x125 and a fine gain of x0.027. The latter settings will produce a distorted spectrum, however. As a general rule, the lowest coarse gain setting possible should be used.

### ***Shaping Time***

Shaping time is usually specific to classes of detectors. Virtually, all common scintillation and CdZnTe semiconductor detectors use a shaping time of 1  $\mu$ sec. If you are not sure, try various shaping time settings until you get the best looking spectrum. Changing shaping time will also usually necessitate changing the gain settings as well.

## **Determining Initial Hardware Settings**

### ***Prerequisites***

This procedure assumes that the detector is attached to the URSA-II, the URSA-II is switched on, the URSA-II MCA software has been successfully started, and a  $^{137}\text{Cs}$  of approximately 1  $\mu\text{Ci}$  is on the detector. It is also assumed that the detector to be used is capable of seeing both the 32 and 662 keV peaks.

## **Discussion**

Hardware settings cannot be adjusted until the “Allow Edit” box is checked.

Generally speaking, most adjustments to expand the separation between peaks should be performed using the HV adjust. Start increasing the gain only if the peak separation remains too small even at the maximum HV recommended for the particular detector; increase the gain until the peak separation is slightly wider than wanted, then reduce the HV as needed. If the peaks are in a good location but appear distorted, try lowering the HV and increasing the gain.

Adjust the threshold lower if too much of the low energy portion of the spectrum is being cut off. Adjust the threshold higher if noise is apparent in the lowest regions of the spectrum.

In using the hardware setting adjustments, the associated “Set” button will become enabled, indicating that the value has been changed from those at which URSA-II is currently set. For example, if you change the HV the “Set HV” becomes enabled. Clicking the associated “Set” button will (1) pause the current acquisition if one is occurring, (2) set all hardware settings that have been changed, not just the one the particular button is associated with, and (3) restart the acquisition using the new settings if one had been occurring without clearing the previous spectrum.

Although it is completely up to the user (and subject to the characteristics of the detector being used), it has been generally found that adjusting the hardware settings such that the 662 keV peak is at about channel 1200 will give an overall energy range coverage to about 2,300 keV.

Hardware settings are automatically saved and applied to a specific URSA-II/detector combination any time a “Set” button is pressed. If different sets of hardware settings are desired for the same detector, create a “new” detector based on that detector, changing the description to reflect the different purpose.

## **Procedure**

4. Click on the “Hardware” button on the URSA-II button panel. This will open the hardware settings panel along the bottom of the spectrum display.
5. Check the “Allow Edit” check box to enable the hardware settings.
6. Ensure that the HV is set to a reasonable value. For relatively new URSA-II users, coarse gain should be at x2 (the lowest setting) and the fine gain should be at x0.500 for an overall gain of x1; the threshold should be at 50 mV.
7. Click the “Start Acquisition” button to begin counting the source. Allow the source to count long enough to see the relative locations of the two <sup>137</sup>Cs peaks. NOTE: If excessive noise is clearly visible in the lowest portion of the spectrum, increase the threshold, clear the spectrum, then restart acquisition. Repeat this process as needed.
8. If no peaks are visible, increase the HV and go back to step 4.
9. If both <sup>137</sup>Cs peaks are not visible:
10. If there are very few counts to the right of the visible peak but many to the left (i.e., only the 662 keV peak is visible) and it is towards the right of the spectrum display, increase the HV and go back to step 4.
11. If there are many counts to the right of the visible peak (i.e., only the 32 keV peak is visible and the 662 keV peak is out of view to the right), decrease the HV and go back to step 4.
12. If there are very few counts to the right of the visible peak but many to the left (i.e., only the 662 keV peak is visible) but the peak is in close to the desired location on the spectrum, adjust the threshold closer to zero and go back to step 4.

- Once all the hardware settings are finalized, an energy calibration can be performed.

### Prerequisites

## Discussion

URSA-II MCA uses a linear interpolation between energy calibration points. More sophisticated modeling was



not implemented because of the wide range of characteristics in the detectors supported by the URSA-II, which make it impossible to accurately model for energy response. It was also determined that there were certain advantages to using this method, especially in the low-energy range. In short, the more data points entered, the more accurate the energy calibration will be. If there is a limited energy region in which you are interested, adding additional data points in those areas will increase the accuracy in that area without skewing the energy calibration in other regions of the spectrum. Be careful, however, of energies extrapolated very far beyond calibrated points.

If an estimate of the energies for the lowest and/or highest energies on the spectrum (i.e., energies at channels 1 and/or 4094) can be made, it is a good idea to enter these as energy calibration points to reduce extrapolation error. Additional energy calibration points, up to a total of 14, can be added or altered at any time during the operation of URSA-II MCA, and will be reflected in all subsequent analyses. At least two calibration points must be entered to perform an energy calibration.

It is not necessary to stop a spectrum acquisition to perform or alter an energy calibration, although acquisition may automatically pause briefly and restart. Calibration points may be entered in any order; they will be arranged by order of energy when the “Enrgy Cal!” button is pressed.

If this step is begun immediately following the hardware settings procedure above, and the final  $^{137}\text{Cs}$  spectrum is displayed, that spectrum can be used instead of acquiring a new one (skipping step 1 below). The spectrum can be zoomed in or out at any point as desired by using the mouse to drag a box on the spectrum display.

### ***Procedure***

1. Acquire a spectrum with known peaks. It is usually a good idea to start with a relatively simple spectrum, such as  $^{137}\text{Cs}$ .
2. From the “Utility” menu, select “Energy Calibrate...” The energy calibration window will appear. If this is the first energy calibration for this detector, the energies for the two  $^{137}\text{Cs}$  peaks will be present. The energy calibration window can be moved around the screen by clicking on the blue bar along the top and dragging it to the desired location.
3. Assuming a  $^{137}\text{Cs}$  spectrum is displayed, assign channels to the energies by:
  - a. Clicking the radio button next to “32.89” keV. The keV box and the channel box to its immediate right will turn yellow.
  - b. Move the mouse cursor over the 32.89 keV peak on the spectrum display and double click. A yellow line will appear on the spectrum indicating the location of this energy calibration point, and the channel number will appear in the channel box.
  - c. If the energy calibration point is not in the optimal location, adjust its location by double clicking in a different location, clicking on the relevant “Channel” box and entering the desired channel number using the keyboard, or using the spin buttons to the immediate right of the relevant “Channel” box to move the data point up or down one channel at a time.
  - d. Click the radio button next to “661.7” keV. The keV box and the channel box to its immediate right will turn yellow.
  - e. Move the mouse cursor over the 661.7 keV peak on the spectrum display and double click. A yellow line will appear on the spectrum indicating the location of this energy calibration point. Adjust the location of the yellow line as in step 3.c.
4. Click the “Enrgy Cal” button. This will perform an energy calibration based on the initial two data points.



The energy calibration window will remain open. At this point, when the cursor is moved over the spectrum display, the energy associated for the cursor location will be displayed in the spectrum status bar in addition to the status bar.

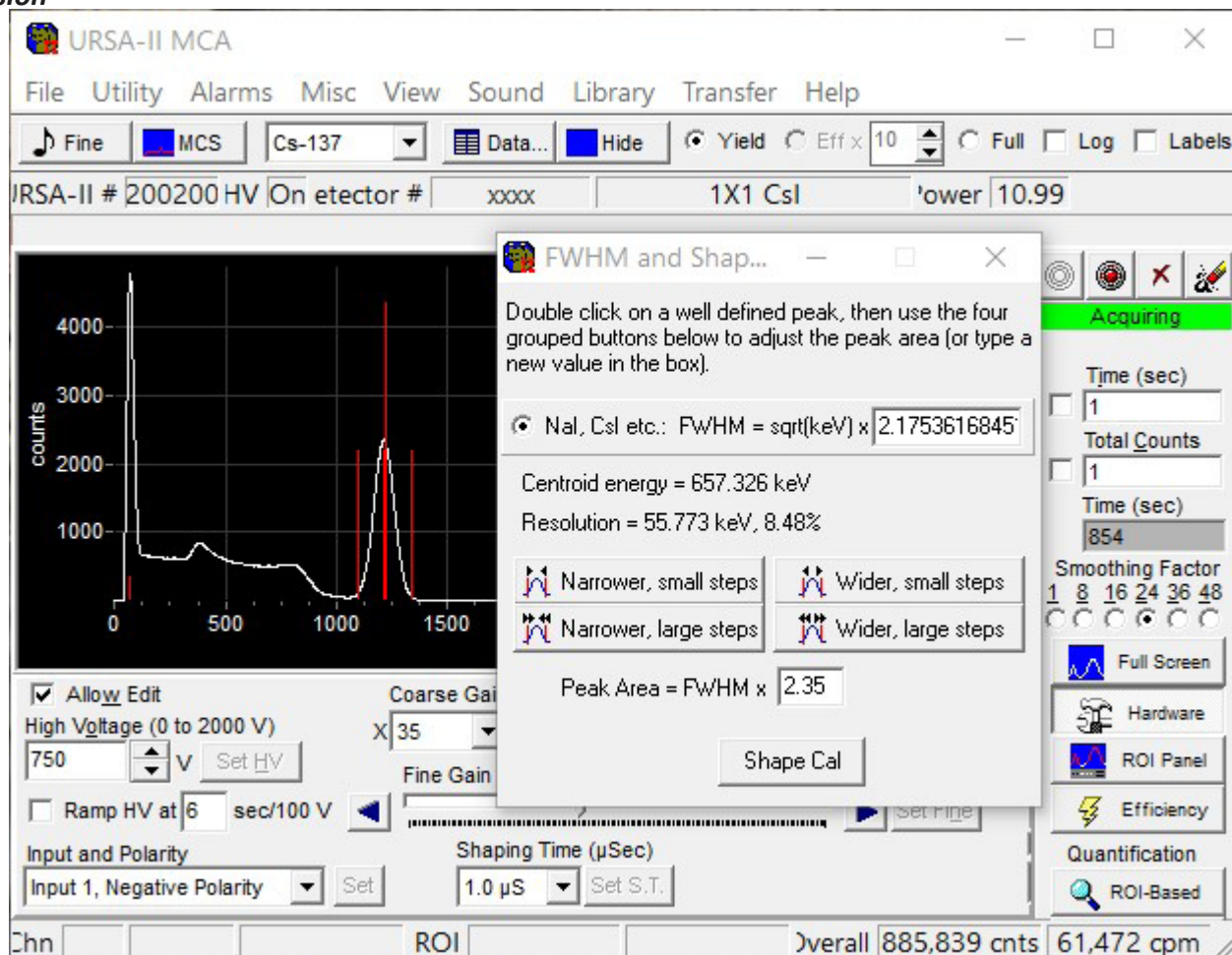
5. Acquire additional spectra and add additional energy calibration data points as desired. When finished, click the “Close” button to hide the energy calibration window.

## Performing a Shape Calibration

### Prerequisites

This procedure assumes that the detector is attached to the URSA-II, the URSA-II is switched on, the URSA-II MCA software has been successfully started, a radioactive source of known isotopic composition is on the detector, URSA-II hardware settings have been set appropriately, and an energy calibration has been performed.

### Discussion



For NaI(Tl) detectors, the “Full Width at Half Maximum” (FWHM) is proportional to the square root of the centroid energy as is the overall peak area. The Shape Calibration helps determine the exact multipliers for the FWHM for the specific detector.

### Procedure

1. Acquire a spectrum with known peaks. It is usually a good idea to start with a relatively simple spectrum, such as 2. From the “Utility” menu, select “Shape Calibrate...” The shape calibration window will appear. The energy calibration window can be moved around the screen by clicking on the blue bar along the top and dragging it to the desired location.

3. On the spectrum display, double click near the center of a well-defined peak. This will put a red line in the centroid of the peak as well as calculate and display the FWHM multiplier. Two additional red lines will also be displayed estimating the bounds of the peak area.
4. Use the group of four buttons to adjust the outer red lines to accurately reflect the boundaries of the peak.
5. Click the “Shape Cal” button.

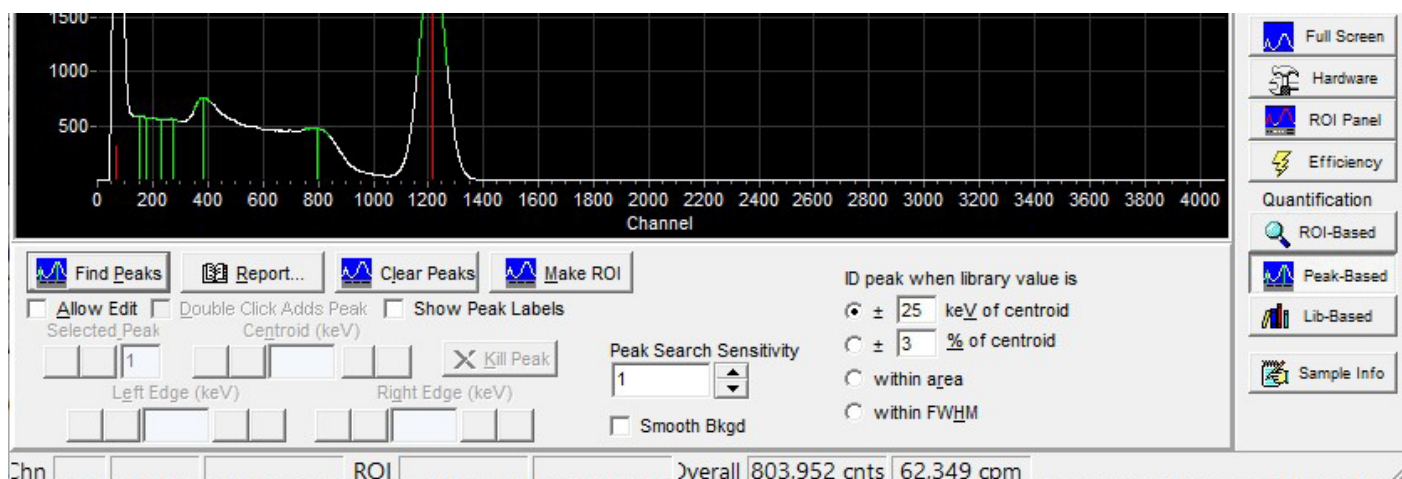
The shape calibrations is now complete.

## Creating a Regions of Interest (ROI) Set

### Prerequisites

This procedure assumes that the detector is attached to the URSA-II, the URSA-II is switched on, the URSA-II MCA software has been successfully started, a radioactive source of known isotopic composition is on the detector, URSA-II hardware settings have been set appropriately, and an energy calibration has been performed.

### Discussion



An ROI set must be created in order to perform a detector efficiency calibration. You will also be able to use ROI set later for performing a quantitative analysis of a spectrum.

There are two ways to create an ROI set. In the first method, a spectrum is acquired and the “Find Peaks” buttons is pressed from the “Peak-Based” panel, edited as desired, then saved as an ROI set. The ROI set can be further edited from the ROI Panel, including adding or removing specific ROIs to or from the set. In the second method, ROIs are created from scratch by manually selecting portions of the spectrum.

ROI sets are based on energy, not channel. This allows an ROI set to be used with more than one detector. The channel locations for the starting and ending points are re-calculated from the stored energy values each time the ROI set is loaded and when an energy calibration is performed.

ROIs will be sorted by energy, from lowest to highest, when an efficiency calibration is performed.

### Creating an ROI Set Using “Find Peaks” (“Automatic Method”)

1. Acquire a spectrum with known peaks. It is usually a good idea to start with a relatively simple spectrum such as <sup>137</sup>Cs.
2. Click on “Peak-Based” on the URSA-II button panel. This will open the peak settings panel along the bottom of the spectrum display.
3. From the Peak-Based panel, click on “Find Peaks.” The peaks and their ROIs will be highlighted automatically

in green.

4. The found peaks can now be edited, if desired, by clicking on the “Allow Edit” box. The user can now adjust the centroid and the left and right edges of each peak region. Peaks can also be added as well as deleted.

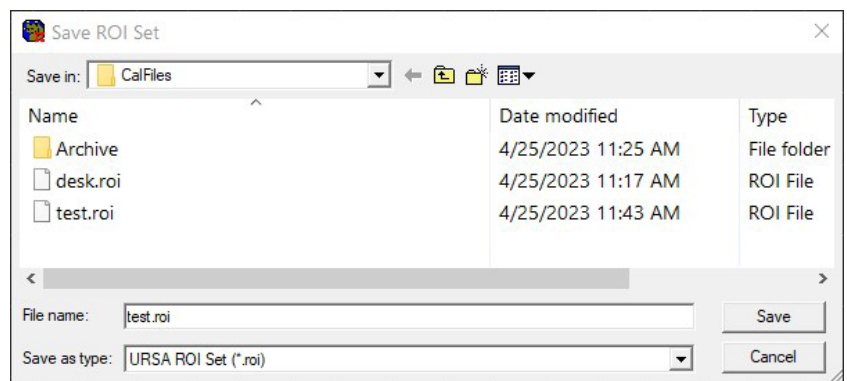
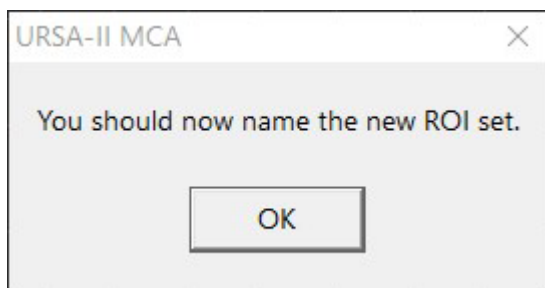
a. To add a peak, simply click on the “Double Click Adds Peak” box. Locate a peak on the spectrum with the mouse and double click. Another peak region will appear.

b. To adjust the centroid, left or right edges of any peak region:

i) Select a peak using the “Selected Peak” arrow set. (Default designates the left-most peak #1.) The selected peak will appear in purple highlight, while the remaining peaks will be highlighted in green.

ii) Using the “Centroid (keV),” “Left Edge (keV)” and “Right Edge (keV)” arrow sets, adjust accordingly. (Double arrows adjust the settings in approximately 5 keV increments, while the single arrows adjust the settings in approximately 0.5 keV increments.)c. To delete a peak, first select the peak to be deleted using the “Selected Peak” arrow set. Once the peak is highlighted, click on the “Kill Peak” button.

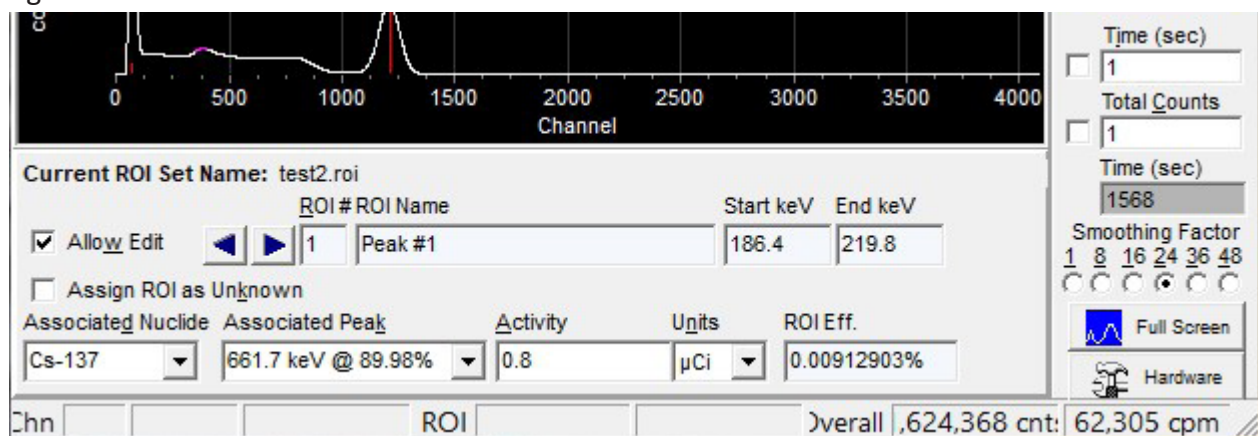
5. When finished editing found peaks, click on “Make ROI” on the Peak Panel to convert the found peaks into an ROI set. A message will display indicating that the ROI set should be given a name. Naming the ROI set can be put off until later, but it is highly recommended that a name be given now.



6. Type a name in the “Save ROI Set” dialog, and click the Save button.

7. Once the set has been saved, the panel along the bottom of the spectrum display will switch over to the ROI Panel to allow additional editing, if desired.

8. Editing the ROI set from the ROI Panel is described in the next section.



### **Manually Creating or Editing an ROI Set (“Manual Method”)**

1. Acquire a spectrum with known peaks. It is usually a good idea to start with a relatively simple spectrum such as 137Cs.

2. Click on “ROI Panel” on the URSA-II button panel. This will open the ROI edit settings panel along the bottom of the spectrum display.
3. To create a new ROI set, click on the “New ROI Set” button to assign a file name to the new set. (If this is not done before the following steps, a “Not Saved!” warning will be displayed as a reminder. This warning will also be shown any time the ROI as displayed is different from the saved ROI file.)
4. To create an ROI by dragging on the spectrum display:
  - a. Use the left and right arrow buttons to either select an existing ROI to edit (it will be displayed on the spectrum in fuchsia) or select a “blank” ROI (input fields will be blank and no fuchsia will be present on the spectrum display).
  - b. Click on the “Set ROI” radio button.
  - c. Use the cursor to locate the edge of the desired region. Click and drag the fuchsia box to encompass the desired region
5. To create an ROI by double clicking each edge:
  - a. Use the left and right arrow buttons to either select an existing ROI to edit (it will be displayed on the spectrum in fuchsia) or select a “blank” ROI (input fields will be blank and no fuchsia will be present on the spectrum display).
  - b. To set the left edge, Check the “Double Click to set Starting Energy (keV)” radio button. To set the right edge, Check the “Double Click to set Ending Energy (keV)” radio button.
  - c. Position the cursor at the suitable location on the spectrum display and double click.
  - d. The energy and associated channel will be displayed in the appropriate boxes on the ROI Panel.
  - e. When both edges have been entered, the ROI will be displayed on the spectrum in fuchsia.
6. ROIs can be edited by using the relevant arrow and double arrow keys. Arrows move the edge of the ROI by one channel, double arrows move the ROI by ten channels.
7. Type a name for the ROI in the “ROI Name” box. While it is not strictly required that each ROI be given a name, it is strongly recommended. Individual ROI names can be up to 24 characters long.
8. Repeat as needed for additional ROIs.
9. You can acquire a new spectrum to add additional ROIs.
10. After editing, don’t forget to save the ROI set.

You are now ready to perform an efficiency calibration

## **Performing an Efficiency Calibration**

### ***Prerequisites***

An Energy Calibration must be completed and an ROI set loaded before an Efficiency Calibration can be performed. ROIs will be sorted by energy, from lowest to highest, when an efficiency calibration is performed.

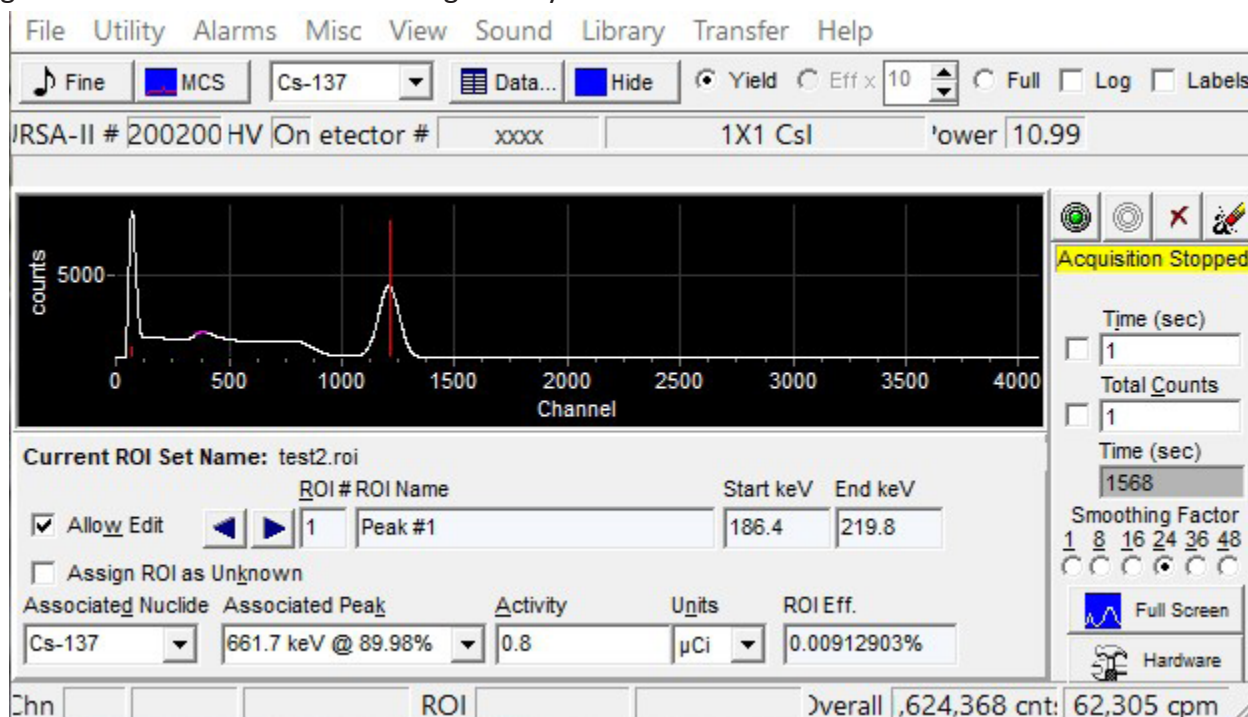
### ***Discussion***

Efficiency calibrations are attached to specific ROI sets. Known activities of known isotopes are assigned to specific energies in the spectrum. URSA-II MCA uses a linear interpolation between efficiency calibration points to allow quantification of isotopes for which no specific calibration source is available. The same efficiency calibration is used when performing ROI, peak, or library-based quantification.



Note that the ROI set can contain isotopes that are not included in the efficiency calibration source. These must be designated as “unknowns,” however, so that URSA-II MCA knows to calculate efficiencies for these ROIs from interpolated data.

The perfect efficiency calibration source matches exactly the type of samples you will be quantifying in isotopic composition, activity, and physical makeup. A good efficiency calibration source contains isotopes with energies similar to or at least bracketing those you are interested in.



Isotopes and specific peaks must be assigned to all ROIs including “unknowns.” The selections for these are limited to those enabled in the library currently being used.

### Procedure

1. Acquire a spectrum of your efficiency calibration source. A background spectrum should also be subtracted from the display if that is how your samples will be analyzed.
2. Click on “Efficiency” on the URSA-II button panel. This will open the efficiency calibration panel along the bottom of the spectrum display.
3. To calibrate, click on the “Allow Edit” box.
4. Select a specific ROI using the “ROI #” arrows.
5. If the ROI is one contained in the calibration source:
  - a. Select the nuclide for the ROI from the “Associated Nuclide” drop-down list.
  - b. Select the peak energy for the ROI from the “Associated Peak” drop-down list.
  - c. Enter the activity of the source being used in the “Activity” box.
  - d. Select the appropriate units from the “Units” drop-down list. NOTE: The units must be the same for all isotope activities entered for the calibration!
6. If the ROI is not contained in the calibration source :

- a. Check the “Assign ROI as Unknown” box.
  - b. Select the nuclide for the ROI from the “Associated Nuclide” drop-down list.
  - c. Select the peak energy for the ROI from the “Associated Peak” drop-down list.
7. Click on the “ROI Eff. Cal!” button.
  8. Click on the “Report” button to view, save, or print the efficiency calibration report. This report is available any time following the efficiency calibration, until replaced by a new efficiency calibration.

## Fine Tuning Hardware Settings

### Prerequisites

This procedure assumes that an energy calibration has been performed.

### Discussion

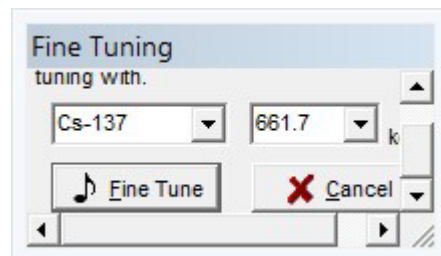
The “Fine Tuning” procedure provides an automated way of adjusting the Fine Gain to compensate for small shifts in the spectrum due to changes in the temperature, etc., of the detector.

This procedure can also be done manually. In many cases, it is quicker to manually adjust the fine gain setting.

### Procedure

Click on the “Fine” button on the button bar. A small window will pop up and display an isotope selection drop-down menu and an energy peak selection drop-down menu. The hardware settings panel will also open along the bottom of the spectrum display, but only the “Fine Gain Adjust ( $\pm 64$ )” will be active.

1. Select an isotope and an energy peak from the drop-down menus.
2. Click on the “Fine Tune” button. Note: The corresponding isotope source must be under the detector in order for the fine tuning to be successful.
3. A series of acquisitions will follow until the most accurate fine gain adjustment is achieved. This could take several minutes.
4. A “Fine Gain Adjustment Complete” message will appear when the procedure is done.



## Service

**CAUTION:** Do not send a contaminated instrument for repair or calibration under any circumstances. There are no serviceable parts inside the instrument.

If the URSA II requires servicing, please contact your distributor or the manufacturer at the following address:

S.E. International, Inc.

P.O. Box 39, 436 Farm Rd.

Summertown, TN USA 38483-0039

Tel 931-964-3561, Fax 931-964-3564

E-mail: [radiationinfo@seintl.com](mailto:radiationinfo@seintl.com)

### Software License Agreement

This is a legal agreement between you and Paul R. Steinmeyer as well as Radiation Safety Associates, Inc. (collectively “RSA”), the owners of the URSA II Hardware and computer program that accompanies this license agreement (the “Software”).

BY INSTALLING THE SOFTWARE YOU SIGNIFY THAT YOU AGREE TO BE LEGALLY BOUND BY THE TERMS AND CONDITIONS OF THIS LICENSE AGREEMENT. These are the only terms by which RSA software products are licensed to you.

### **GRANT OF LICENSE**

RSA hereby grants to you a non-exclusive, non-transferable license to use the Software according to the terms and conditions herein. Legal title to the Software and Software documentation provided under this agreement shall remain with RSA as its sole property, subject to your rights as specified in this agreement.

### **DESCRIPTION OF RIGHTS AND LIMITATIONS**

You may install and use this software on as many computers as you like, without restriction or limitation. You may not reverse engineer, decompile or disassemble the Software, except and only to the extent that such activity is expressly permitted by applicable law notwithstanding this limitation. You may not modify, adapt, translate, rent, lease, lend, sell, distribute or create any work deriving from the Software or any part thereof. You may use the Software and its processes for its internal purposes.

### **LIMITED WARRANTY**

This Software is provided “as is” without warranty of any kind, to the maximum extent permitted by applicable law. RSA further disclaims all warranties, including without limitation any implied warranties of merchantability, fitness for a particular purpose, and non-infringement of patent or copyright. The entire risk arising out of the use or performance of the Software and documentation remains with you, to the maximum extent permitted by applicable law. In no event shall RSA or its suppliers be liable for any consequential, incidental, direct, indirect, special, punitive, or other damages whatsoever (including, without limitation, damages for loss of business profits, business interruption, loss of business information, or other pecuniary loss) arising out of this agreement or use of or inability to use the Software, even if RSA has been advised of the possibility of such damages.

### **HIGH RISK ACTIVITIES**

The Software is not fault-tolerant and is not designed, manufactured or intended for use or resale as on-line control equipment in hazardous environments requiring fail-safe performance, such as in the operation of nuclear facilities, aircraft navigation or communication systems, air traffic control, direct life support machines, or weapons systems, in which the failure of the Software could lead directly to death, personal injury, or severe physical or environmental damage (“High Risk Activities”). RSA and its suppliers specifically disclaim any express or implied warranty of fitness for High Risk Activities.

### **MISCELLANEOUS PROVISIONS**

By installing the Software you agree to indemnify RSA for any damages which RSA may suffer by reason of any breach of this Agreement on your part. All content accessed through the Software is the property of the applicable content owner and may be protected by applicable copyright law. This license gives you no rights to such content. No modification of this Agreement shall be valid unless made in writing and executed by RSA. Should any provision contained within any paragraph of this Agreement contravene the law of any jurisdiction in which it is to be performed, such provision shall be severed from and shall be deemed not to be a part of this Agreement, but such severance shall in no way affect any of the remaining provisions hereof or cause the same to be void.

Universal Radiation Spectrum Analyzer, URSA, and URSA-II MCA are trademarks of Paul R. Steinmeyer. Radiation Safety Associates, Inc. and RSA are trademarks of Radiation Safety Associates, Inc.

## **Hardware Warranty**

### ***LIMITED WARRANTY***

WARRANTOR: S.E. International, Inc., P.O. Box 39, 436 Farm Road, Summertown, TN 38483-0039, USA, (931) 964-3561

**ELEMENTS OF WARRANTY:** S.E. International, Inc., warrants for one year all materials and craftsmanship in this product to be free from all defects with only the limitations set out below.

**WARRANTY DURATION:** The warranty shall terminate and be of no further effect one year after the original date of purchase of the product or at the time the product is: a) damaged or not maintained as is reasonable or necessary, b) modified, c) repaired by someone other than the warrantor for a defect or malfunction covered by this Warranty, d) contaminated with radioactive materials, or e) used in a manner or purpose for which the instrument was not intended or contrary to S.E. International, Inc.'s written instructions.

This warranty does not apply to any product subjected to corrosive elements, misuse, abuse, or neglect.

**STATEMENT OF REMEDY:** In the event that the product does not conform to the warranty at any time while this warranty is effective, the Warrantor will repair the defect and return the instrument to you prepaid, without charge for parts or labor. Shipping cost to the factory for repair is the responsibility of the customer. Customer is also responsible for international customs, duties, and taxes to and from the repair facility.

**NOTE:** While the product will be remedied under this warranty without charge, this warranty does not cover or provide for the reimbursement or payment of incidental or consequential damages arising from the use of or the inability to use this product. The liability of the company arising out of the supplying of this instrument, or its use, whether on warranties or otherwise, shall not in any case exceed the cost of correcting defects in the instrument, and after the said one year period all such liability shall terminate. Any implied warranty is limited to the duration of the written warranty.

**PROCEDURE FOR OBTAINING PERFORMANCE OF WARRANTY:** In the event that the product does not conform to this warranty, please write or call to the address above. S.E. International, Inc. will not accept contaminated instruments for calibration or repair under warranty or otherwise.

**NOTE:** Before using this instrument, the user must determine the suitability of the product for his or her intended use. The user assumes all risk and liability connected with such use.

# Calibration Database Application

---

Please fill out this form and send it back to us if you would like to be notified of the NIST calibration renewal for your instrument to:

**S.E. International, Inc.**

P.O. Box 39, 436 Farm Rd. Summertown, TN 38483  
1.800.293.5759 | 1 931.964.3561 | Fax: 1.931.964.3564  
www.seintl.com | radiationinfo@seintl.com

\_\_\_\_\_  
NAME

\_\_\_\_\_  
COMPANY

\_\_\_\_\_  
ADDRESS

\_\_\_\_\_  
CITY

\_\_\_\_\_  
STATE, ZIP, & COUNTRY

Or fill out the form online at  
**<http://seintl.com/calibrations/>**

